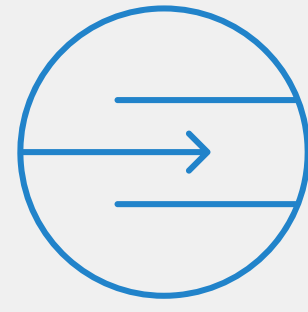
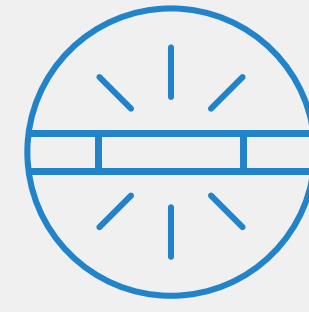




Excellent kink
and deformation
resistance



Easy insertion



Superb radiopacity



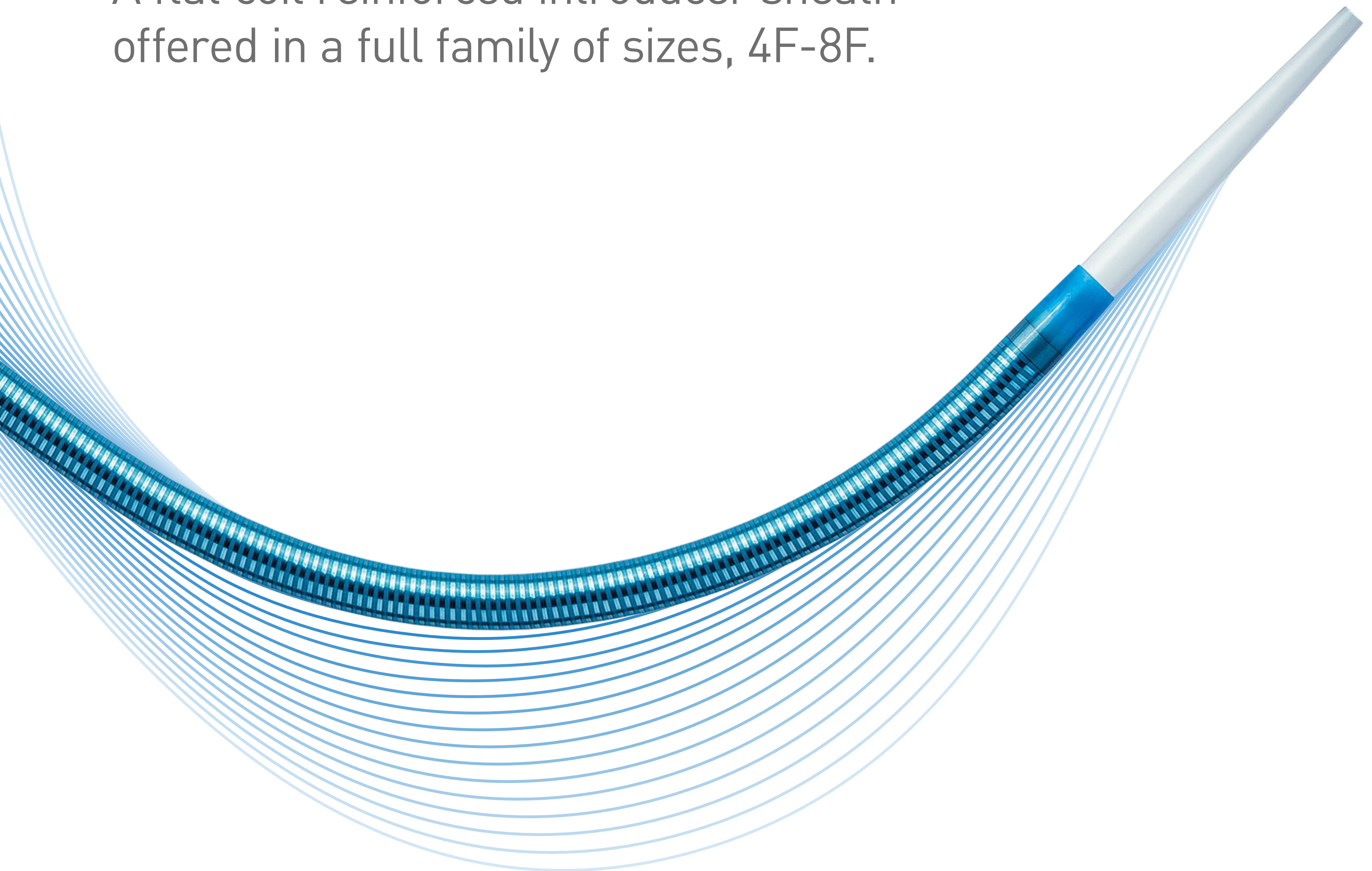
Technical data /
ordering info

Vascular Intervention // **Peripheral**
Reinforced Introducer Sheath System

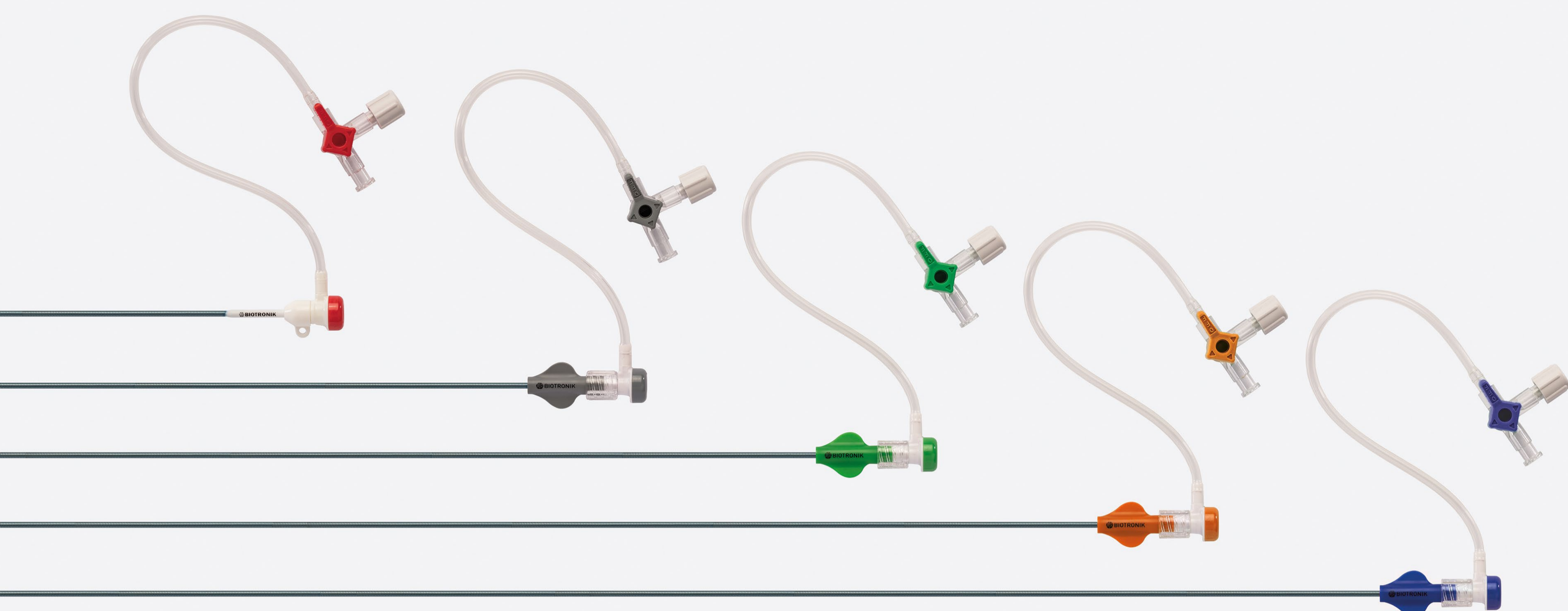
 **BIOTRONIK**
excellence for life

Fortress[®]

A flat coil reinforced introducer sheath
offered in a full family of sizes, 4F-8F.



Fortress



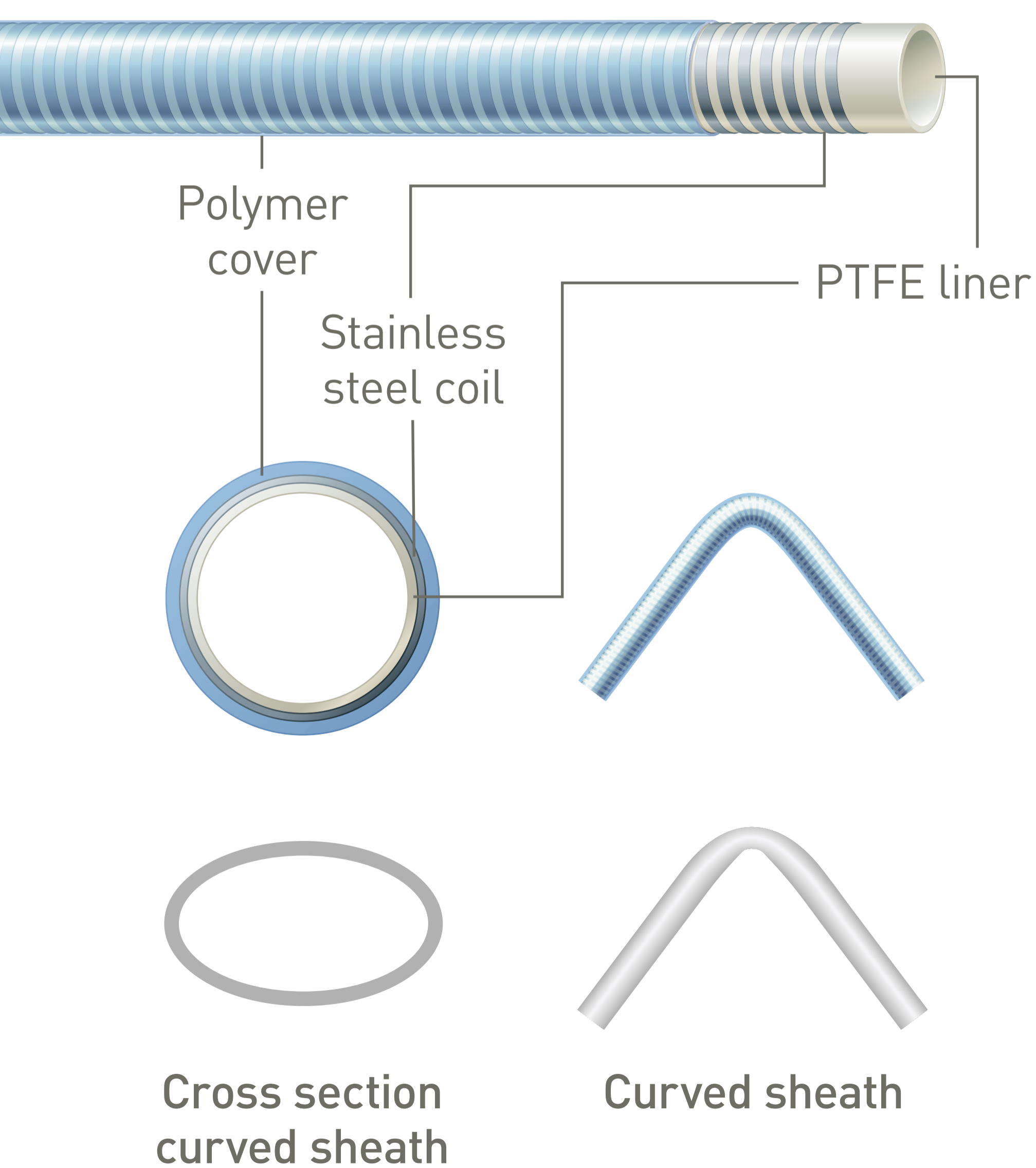
Excellent kink and deformation resistance

Coil reinforced sheath

The polymer embedded flat stainless steel coil shaft provides flexibility and excellent kink and deformation resistance.

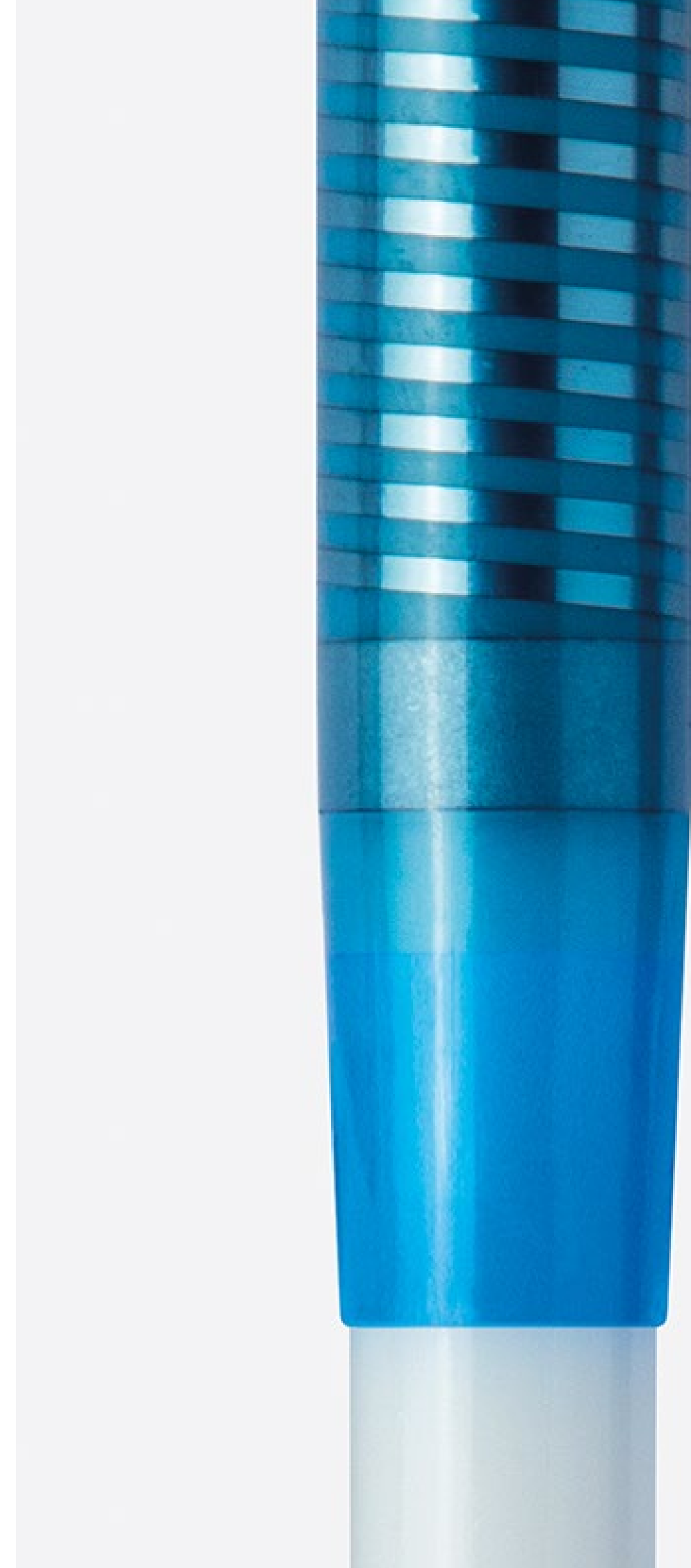
PTFE liner

The non-ovaling characteristic combined with its friction lowering PTFE liner enables devices to easily pass through tight anatomical curves.



Fortress's coil reinforced sheath **does not oval** when curved, maintaining lumen diameter.

Standard competitor non-reinforced sheath **ovals** when curved, thereby reducing the lumen diameter.



Easy insertion

Smooth tapered sheath and dilator tip

The sheath and dilator have a smooth tapered tip and an atraumatic tip design for ease of insertion.

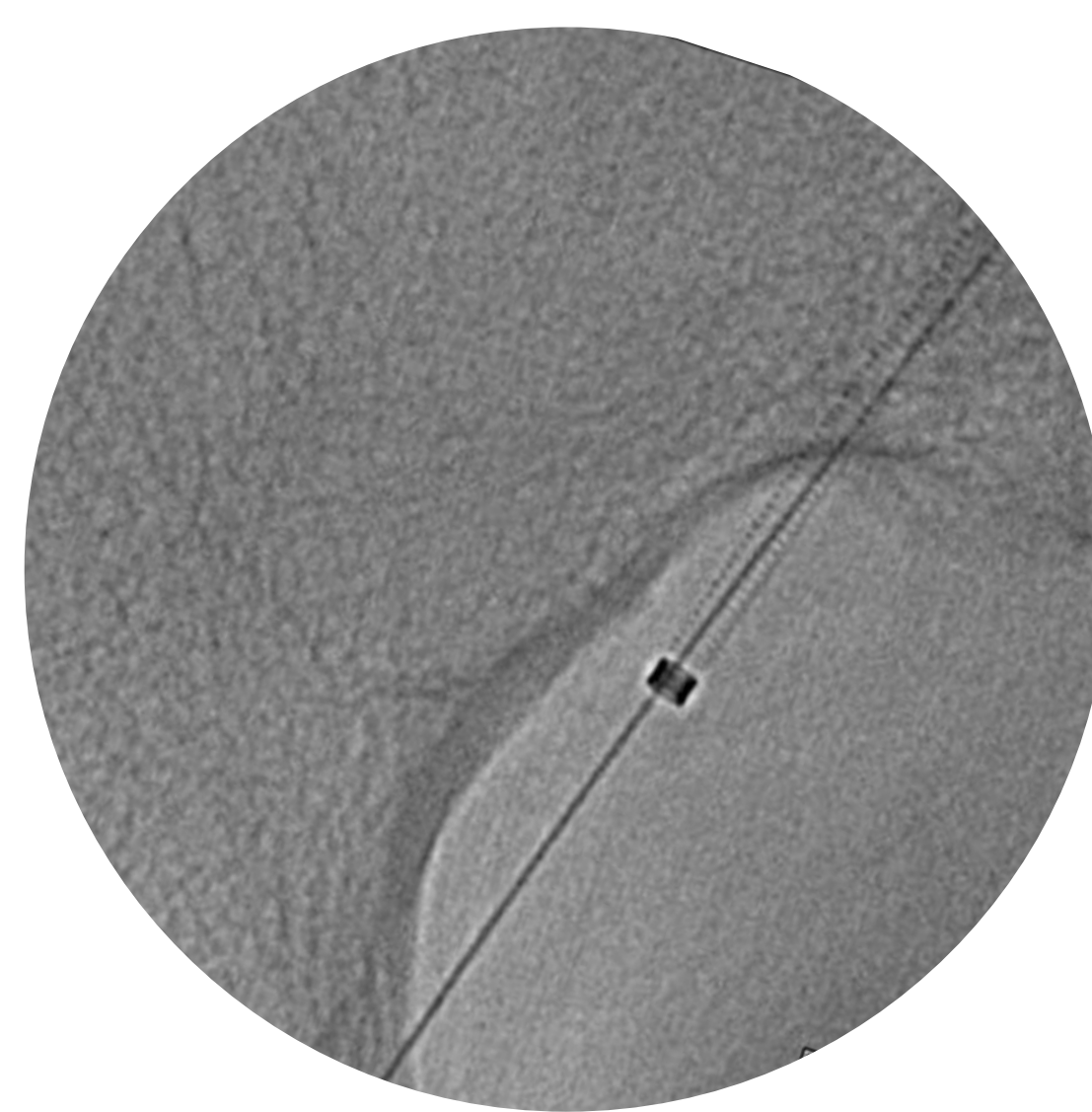
Hydrophobic coated sheath¹

Best in class insertion performance² due to the hydrophobic sheath coating in combination with the smooth tapered sheath and dilator tip.

Superb radiopacity

Radiopaque sheath marker

The platinum alloy marker band provides superb tip radiopacity under fluoroscopic imaging.²



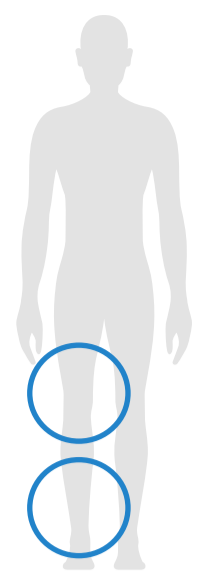
Fortress 4F in the pelvic area

Minimal is optimal

4F

The BIOTRONIK 4F Solutions product portfolio allows for treatment of complex lower limb disease while reducing access site complications.





Reinforced Introducer Sheath System / 4F, 5F, 6F, 7F, 8F popliteal and infrapopliteal arteries.*

Technical Data		Introducer Sheath	
French size		4F, 5F, 6F, 7F and 8F	
Length		45, 65 and 90 cm	
Inner diameter		4F: 0.064" / 1.62 mm; 5F: 0.077" / 1.95 mm; 6F: 0.090" / 2.28 mm 7F: 0.100" / 2.55 mm; 8F: 0.113" / 2.88 mm	
Sheath material		Stainless steel coil reinforced polymer, PTFE liner	
Sheath tip		Smooth taper with radiopaque marker band located 3-5 mm from the sheath tip	
Sheath shape		Pre-curved 45 cm Straight 45, 65 and 90 cm	
Sheath coating		Hydrophobic, distal 30 cm (5F, 6F, 7F and 8F only)	
		Dilator	
Recommended guide wire		0.035"	
Tip		Smooth taper with radiopaque filler material	
Shape		Pre-curved and straight	
Hub		4F: fixed hemostatic valve 5F, 6F, 7F, 8F: removable hemostatic valve Side-arm with color coded 3-way stop cock	

Ordering Information	Sheath length (cm)	Sheath shape	Introducer description	Catalog number	Dilator(s) included	Units per box
4F	45	Curved	Crossover	358813	Curved/Straight	5
	45	Straight	Straight-45	358814	Curved/Straight	5
	65	Straight	Straight-65	444486	Straight	5
	90	Straight	Straight-90	444485	Straight	5
5F	45	Curved	Crossover	386590	Straight	5
	45	Straight	Straight-45	386591	Straight	5
	65	Straight	Straight-65	444484	Straight	5
	90	Straight	Straight-90	444483	Straight	5
6F	45	Curved	Crossover	386593	Straight	5
	45	Straight	Straight-45	386594	Straight	5
	65	Straight	Straight-65	444482	Straight	5
	90	Straight	Straight-90	444481	Straight	5
7F	45	Curved ^a	Crossover	452386	Straight	5
	45	Straight	Straight-45	452382	Straight	5
	65	Straight	Straight-65	452383	Straight	5
	90	Straight	Straight-90	452388	Straight	5
8F	45	Curved ^a	Crossover	452387	Straight	5
	45	Straight	Straight-45	452385	Straight	5
	65	Straight	Straight-65	452384	Straight	5
	90	Straight	Straight-90	452389	Straight	5

^aAvailable on pre-order

1. 5F, 6F, 7F and 8F; 2. BIOTRONIK data on file. *Indication as per IFU. ^aAvailable pre-order only.

Fortress is a trademark or registered trademark of the BIOTRONIK Group of Companies.

Manufacturer:
Contract Medical
International GmbH
Lauensteiner Strasse 37
01277 Dresden, Germany
Tel +49 351 213 88 88
Fax +49351 21388 99

Distributed in the US by:
BIOTRONIK, Inc.
6024 Jean Road
Lake Oswego, OR 97035-5369
Tel (800) 547-0394 (24-hour)
Fax (800) 291-0470
www.biotronik.com

BR431 9/30/21

© 2021 BIOTRONIK AG – All rights reserved.
Specifications are subject to modification,
revision and improvement.



BIOTRONIK
excellence for life