

Vascular Intervention // Coronary // Orsiro

**BIOFLOW-III**

Results for total population out to 5 years

Conclusions

- In this all-comers setting a low Target Lesion Failure¹ (TLF) rate was observed out to 5 years, which implies safety and effectiveness of Orsiro[®]
- The low TLF rate was confirmed for pre-defined subgroups: Diabetics, Acute Myocardial Infarction (MI), Small vessels and Chronic Total Occlusion (CTO)
- Orsiro demonstrated excellent device (98.8%) and procedural (98.2%) success in total population

Study design

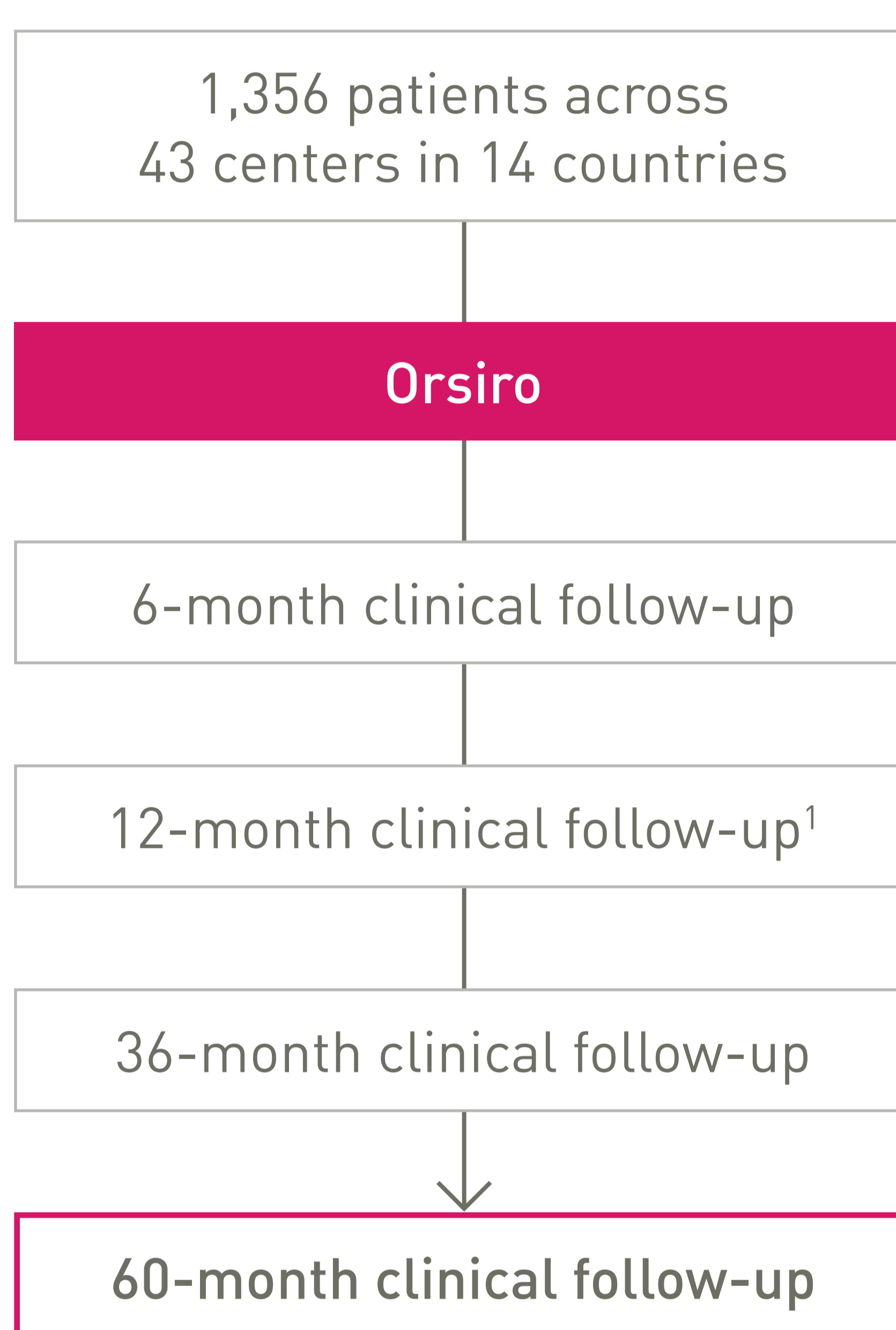
International, prospective, multi-center, open-label, registry of the Orsiro drug-eluting stent in daily clinical practice.

Endpoints**Primary endpoint**

- TLF^Δ at 12 months

Secondary endpoints (selected)

- At 6 to 60 months:
 - TLF rates
 - Target Vessel Revascularization (TVR) rates
 - Stent Thrombosis[§] (ST)
- Clinical device success
- Clinical procedural success

**Patient characteristics²**

n = 1,356

Hypertension	1,029	75.9%
Hypercholesteraemia	815	60.1%
Smoking	741	54.6%
Diabetes mellitus	402	29.6%
Insulin-dependent	137	34.1%
Non-insulin-dependent	265	65.9%
History of MI	376	27.7%
Stable angina	641	47.3%
Previous PCI	537	39.6%

Lesion characteristics²n = 1,738[‡]

B2/C type lesions	905	52.1%
Bifurcation	282	16.2%
Moderate calcification	411	23.6%
Severe calcification	122	7.0%
Reference vessel diameter (mm)*	3.0 ± 0.4	
Lesion length (mm)*	15.8 ± 9.1	
Diameter stenosis (%)	86.3 ± 11.1	

*Data shown as mean ± SD

‡ Number of Lesions

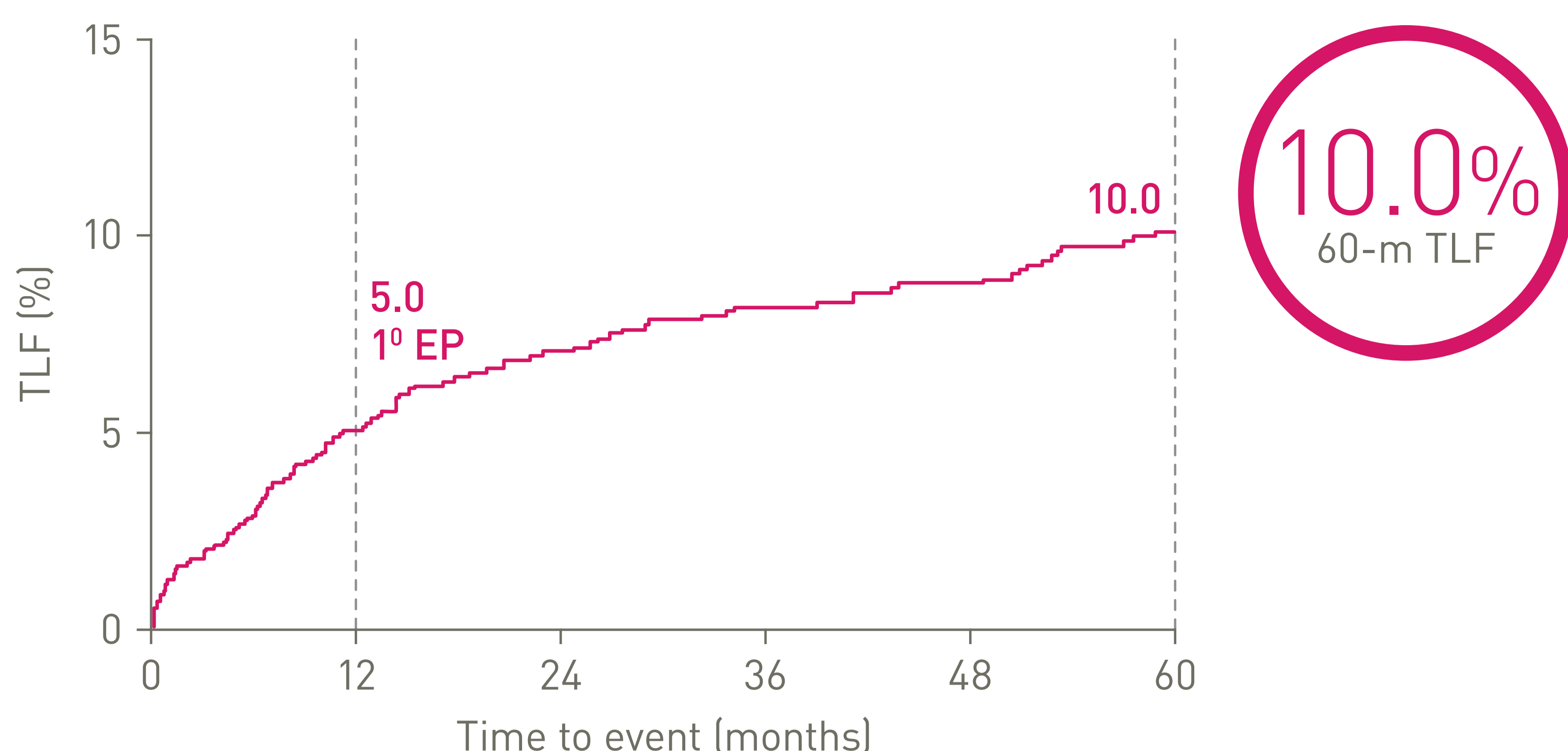
^Δ Composite of cardiac death, target vessel Q-wave or non-Q wave Myocardial Infarction (MI), Emergent Coronary Artery Bypass Graft (CABG), clinically driven Target Lesion Revascularization (TLR).

[§] ST as per ARC definition



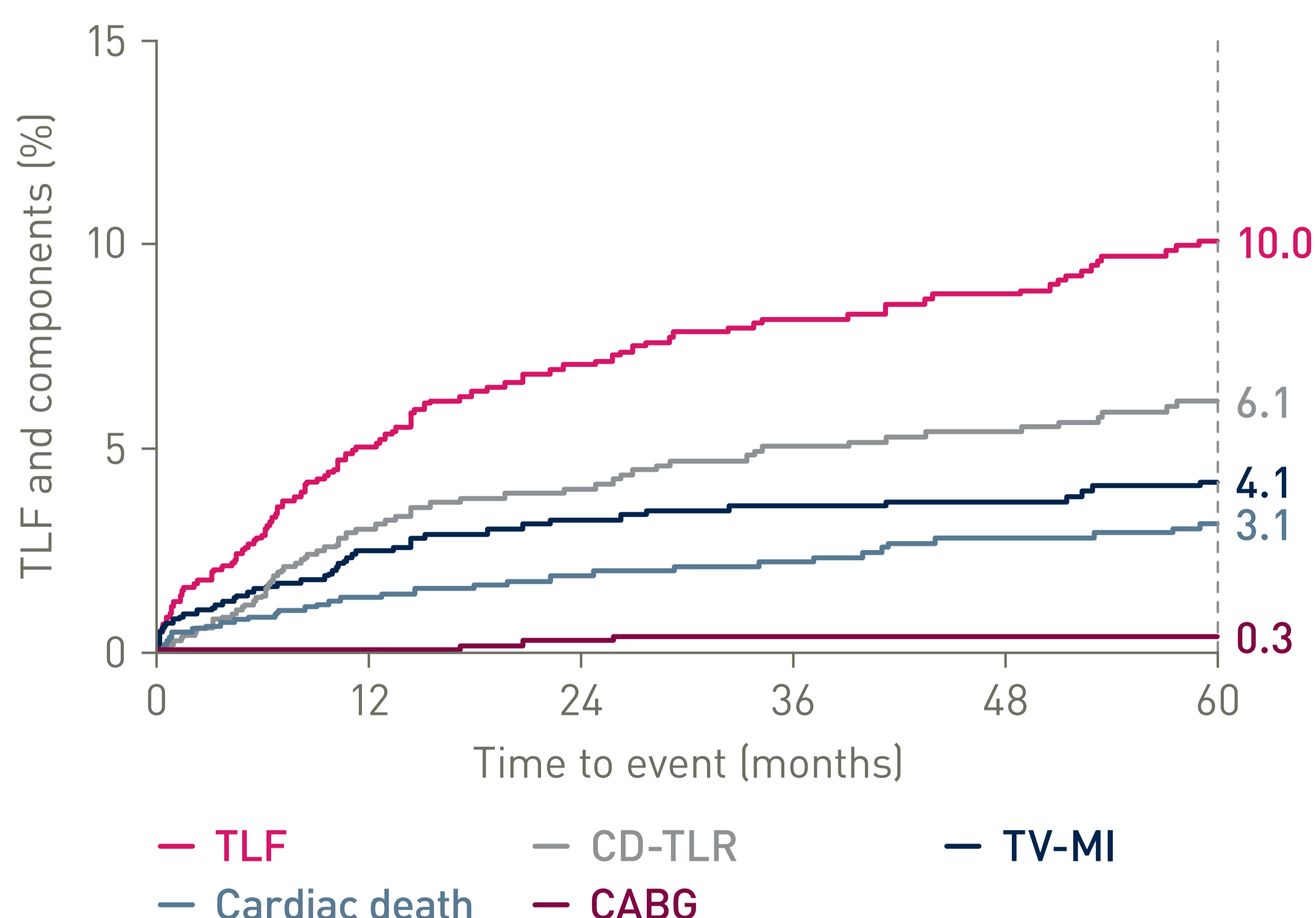


TLF rate out to 5 years³



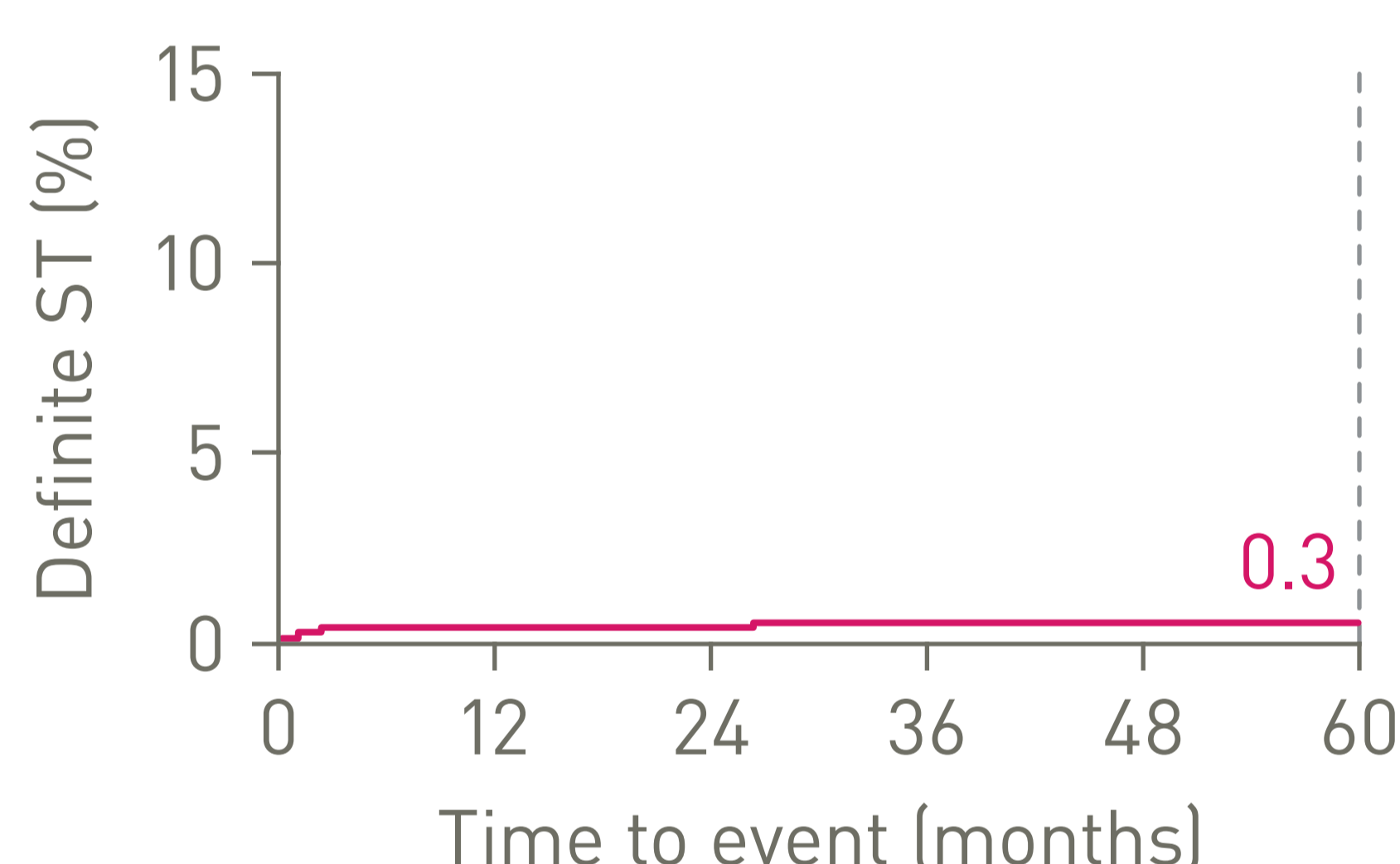
Secondary endpoints selected

TLF and its components out to 5 years total population

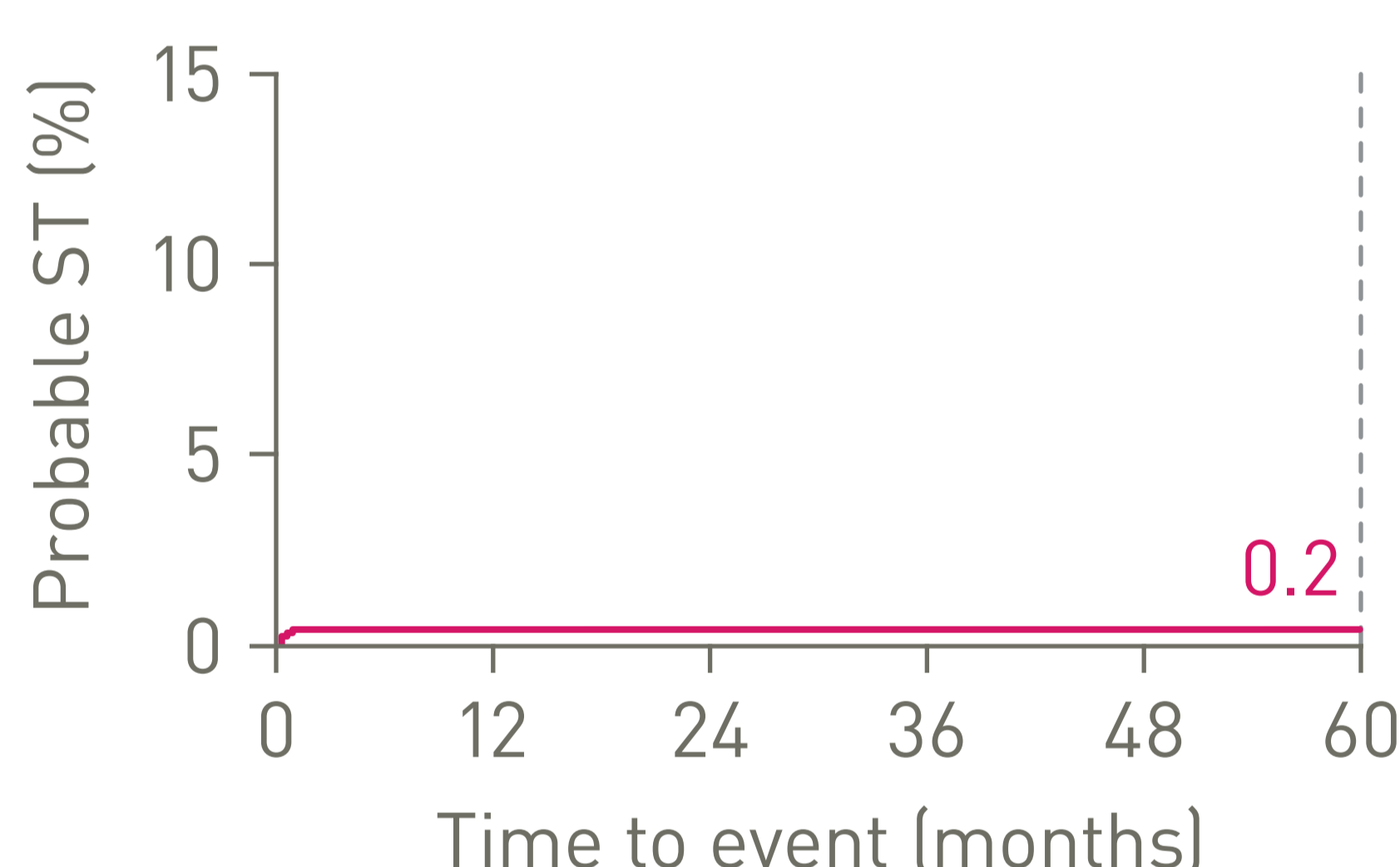


Patients may have experienced more than one component of TLF, therefore components may not sum to overall TLF rate.

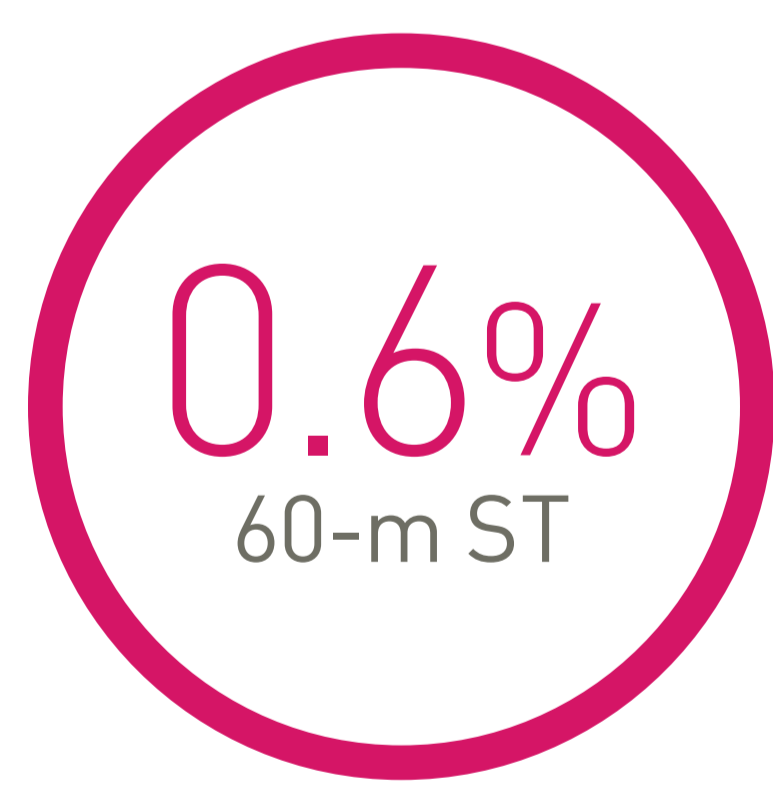
Definite ST³



Probable ST³



Definite or probable ST total population⁴



Device and procedural success²

Device success (n = 1,738)	98.8%
Procedural success (n = 1,356)	98.2%

Coordinating clinical investigator

Prof. Johannes Waltenberger, Universitätsklinikum Münster, Germany

1. Waltenberger J et al. EuroIntervention 2015; 10-online publish-ahead-of-print March 2015; 2. Waltenberger J et al. Real-world experience with a novel biodegradable polymer sirolimus-eluting stent: twelve-month results of the BIOFLOW-III registry. EuroIntervention. 2016 Feb 1;11(10):1106-0; 3. Waltenberger J. BIOFLOW-III Presentation of Five Year Target Lesion Failure Data; Presented at: EuroPCR 2018; May 24, 2018; Paris, France; ClinicalTrials.gov: NCT01553526; 4. BIOTRONIK data on file.

Clinical data conducted with Orsiro, Orsiro Mission's predecessor device can be used to illustrate Orsiro Mission clinical outcomes.

Orsiro is a trademark or registered trademark of the BIOTRONIK Group of Companies.



Vascular Intervention // Coronary // **Orsiro**

BIOFLOW-III
Diabetic subgroup

Conclusions

- In this all-comers setting a low Target Lesion Failure¹ (TLF) rate was observed out to 5 years, which implies safety and effectiveness of Orsiro[®]
- The low TLF rate was confirmed for pre-defined subgroups: Diabetics, Acute Myocardial Infarction (MI), Small vessels and Chronic Total Occlusion (CTO)
- Orsiro demonstrated excellent device (98.8%) and procedural (98.2%) success in total population

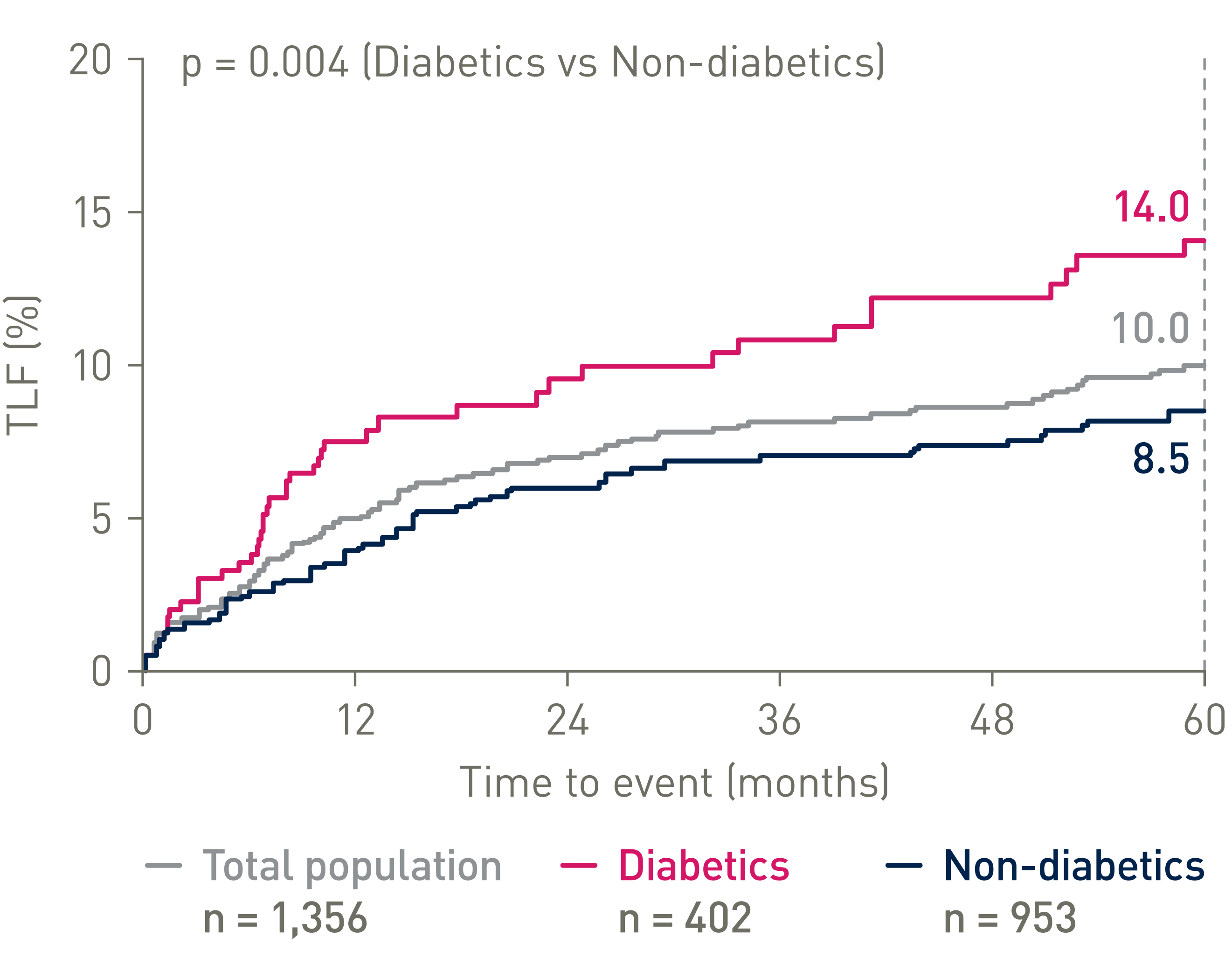
Patient characteristics ¹	Overall n = 1,356	Diabetics n = 402
Hypertension	75.9%	87.6%
Hypercholesteraemia	60.1%	63.7%
Smoking	54.6%	48.5%
Diabetes mellitus	29.6%	100.0%
Insulin-dependent	34.1%	34.1%
Non-insulin-dependent	65.9%	65.9%
History of MI	27.7%	31.6%

Lesion characteristics ¹	Overall n = 1,738 [‡]	Diabetics n = 517
B2/C type lesions	52.1%	48.9%
Bifurcation	16.2%	13.2%
Moderate calcification	23.6%	27.3%
Severe calcification	7.0%	7.9%
Reference vessel diameter (mm)*	3.0 ± 0.4	3.0 ± 0.4
Lesion length (mm)*	15.8 ± 9.1	15.4 ± 9.3
Diameter stenosis (%)	86.3 ± 11.1	85.9 ± 11.2

Major secondary endpoints results out to 5 years¹

	Total population n = 1,356	Diabetics n = 402	Non-diabetics n = 953	p-value**
TLF	10.0%	14.0%	8.5%	0.004
Cardiac death	3.1%	6.7%	1.7%	<0.001
TV-MI	4.1%	7.0%	3.1%	0.011
CD-TLR	6.1%	6.9%	5.7%	0.281
ST [§]	1.8%	4.1%	0.9%	0.0006

Diabetic subgroup TLF^Δ rates out to 5 years¹



1. Waltenberger J. BIOFLOW-III; Presentation of Five Year Target Lesion Failure Data; Presented at: EuroPCR 2018; May 24, 2018; Paris, France; ClinicalTrials.gov: NCT01553526.

* Data shown as mean ± SD

**Diabetics vs Non-diabetics

‡ Number of Lesions

Δ Composite of cardiac death, target vessel Q-wave or non-Q wave Myocardial Infarction (MI), Emergent Coronary Artery Bypass Graft (CABG), clinically driven Target Lesion Revascularization (TLR).

§ ST as per ARC definition

Clinical data conducted with Orsiro, Orsiro Mission's predecessor device can be used to illustrate Orsiro Mission clinical outcomes.

Orsiro is a trademark or registered trademark of the BIOTRONIK Group of Companies.

Vascular Intervention // Coronary // **Orsiro**

BIOFLOW-III
Acute MI subgroup

Conclusions

- In this all-comers setting a low Target Lesion Failure¹ (TLF) rate was observed out to 5 years, which implies safety and effectiveness of Orsiro[®]
- The low TLF rate was confirmed for pre-defined subgroups: Diabetics, Acute Myocardial Infarction (MI), Small vessels and Chronic Total Occlusion (CTO)
- Orsiro demonstrated excellent device (98.8%) and procedural (98.2%) success in total population

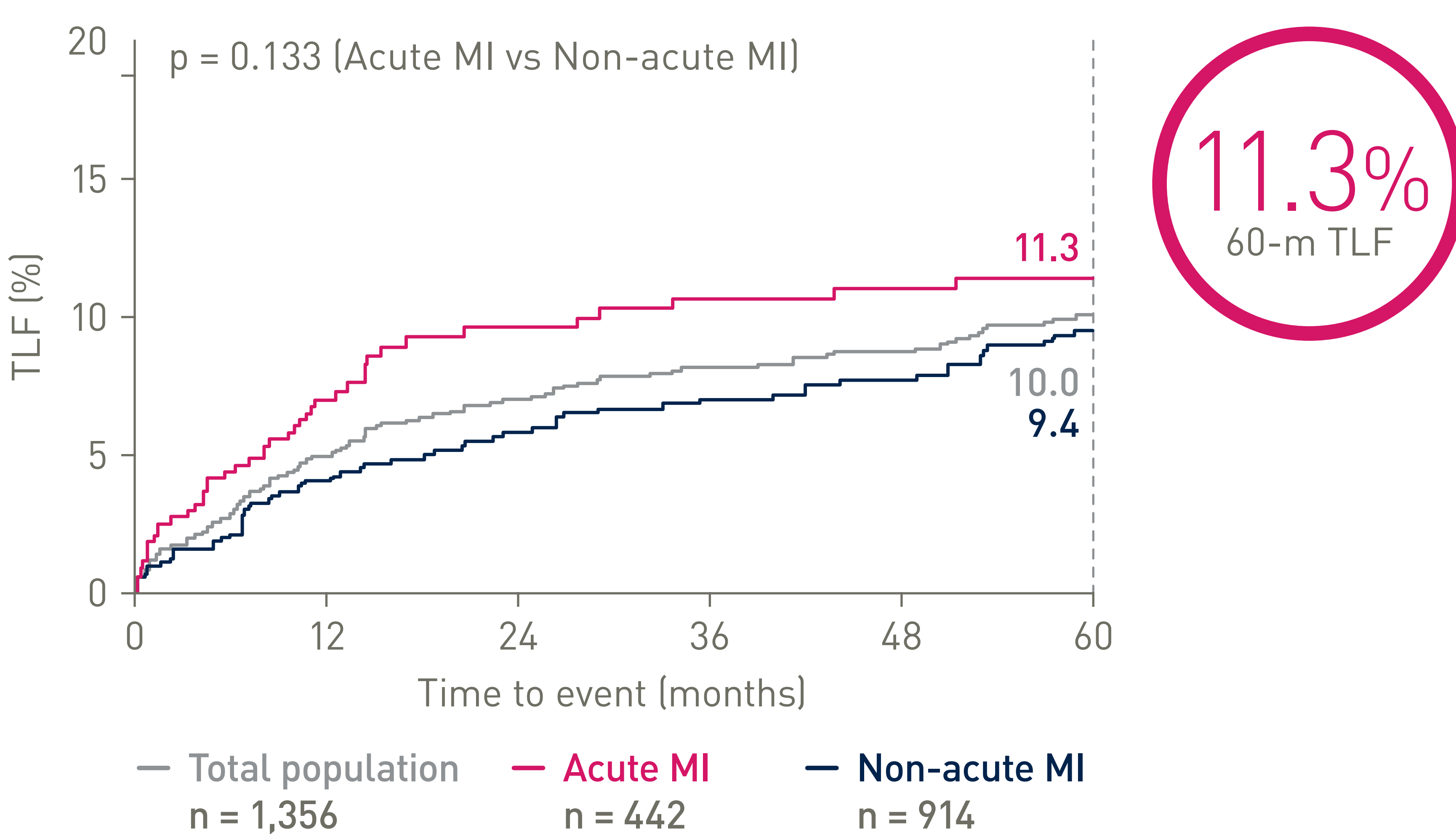
Patient characteristics ¹	Overall n = 1,356	Acute MI n = 442
Hypertension	75.9%	66.3%
Hypercholesterolemia	60.1%	50.2%
Smoking	54.6%	58.1%
Diabetes mellitus	29.6%	25.8%
Insulin-dependent	34.1%	38.6%
Non-insulin-dependent	65.9%	61.4%
History of MI	27.7%	19.7%

Lesion characteristics ¹	Overall n = 1,738 [‡]	Acute MI n = 442
B2/C type lesions	52.1%	57.7%
Bifurcation	16.2%	16.2%
Moderate calcification	23.6%	22.0%
Severe calcification	7.0%	5.3%
Reference vessel diameter (mm)*	3.0 ± 0.4	3.0 ± 0.4
Lesion length (mm)*	15.8 ± 9.1	15.3 ± 7.6
Diameter stenosis (%)	86.3 ± 11.1	90.4 ± 10.1

Major secondary endpoints results out to 5 years¹

	Total population n = 1,356	Acute MI n = 442	Non-acute MI n = 914	p-value**
TLF	10.0%	11.3%	9.4%	0.133
Cardiac death	3.1%	4.2%	2.6%	0.047
TV-MI	4.1%	5.6%	3.4%	0.065
CD-TLR	6.1%	4.7%	6.7%	0.391
ST [§]	1.8%	1.7%	1.8%	0.673

Acute MI subgroup TLF^Δ rates out to 5 years¹



1. Waltenberger J. BIOFLOW-III; Presentation of Five Year Target Lesion Failure Data; Presented at: EuroPCR 2018; May 24, 2018; Paris, France; ClinicalTrials.gov: NCT01553526.

* Data shown as mean ± SD

**Acute MI vs Non-acute MI

‡ Number of Lesions

Δ Composite of cardiac death, target vessel Q-wave or non-Q wave Myocardial Infarction (MI), Emergent Coronary Artery Bypass Graft (CABG), clinically driven Target Lesion Revascularization (TLR).

§ ST as per ARC definition

Clinical data conducted with Orsiro, Orsiro Mission's predecessor device can be used to illustrate Orsiro Mission clinical outcomes.

Orsiro is a trademark or registered trademark of the BIOTRONIK Group of Companies.

Vascular Intervention // Coronary // **Orsiro**

BIOFLOW-III
Small vessel subgroup

Conclusions

- In this all-comers setting a low Target Lesion Failure¹ (TLF) rate was observed out to 5 years, which implies safety and effectiveness of Orsiro[®]
- The low TLF rate was confirmed for pre-defined subgroups: Diabetics, Acute Myocardial Infarction (MI), Small vessels and Chronic Total Occlusion (CTO)
- Orsiro demonstrated excellent device (98.8%) and procedural (98.2%) success in total population

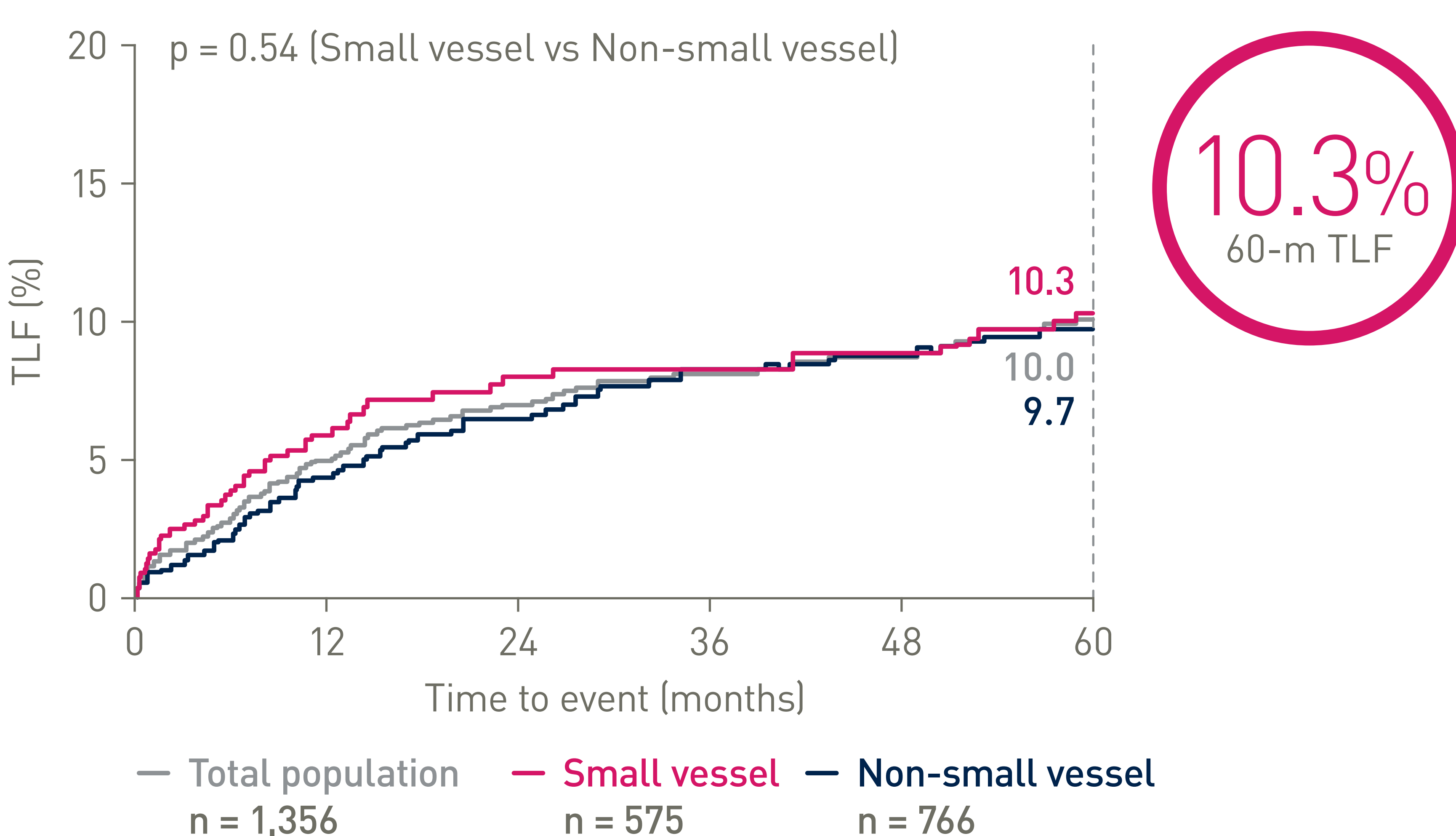
Patient characteristics ¹	Overall n = 1,356	Small vessel n = 575
Hypertension	75.9%	79.0%
Hypercholesteraemia	60.1%	61.0%
Smoking	54.6%	51.0%
Diabetes mellitus	29.6%	32.8%
Insulin-dependent	34.1%	39.9%
Non-insulin-dependent	65.9%	60.1%
History of MI	27.7%	28.5%

Lesion characteristics ¹	Overall n = 1,738 [‡]	Small vessel n = 575
B2/C type lesions	52.1%	49.9%
Bifurcation	16.2%	17.5%
Moderate calcification	23.6%	26.1%
Severe calcification	7.0%	5.4%
Reference vessel diameter (mm)*	3.0 ± 0.4	2.7 ± 0.3
Lesion length (mm)*	15.8 ± 9.1	15.2 ± 8.4
Diameter stenosis (%)	86.3 ± 11.1	86.3 ± 10.9

Major secondary endpoints results out to 5 years¹

	Total population n = 1,356	Small vessel n = 575	Non-small vessel n = 766	p-value**
TLF	10.0%	10.3%	9.7%	0.54
Cardiac death	3.1%	4.4%	2.2%	0.07
TV-MI	4.1%	4.9%	3.6%	0.35
CD-TLR	6.1%	5.0%	6.5%	0.46
ST [§]	1.8%	3.4%	0.7%	0.005

Small vessel subgroup TLF^Δ rates out to 5 years¹



1. Waltenberger J. BIOFLOW-III; Presentation of Five Year Target Lesion Failure Data; Presented at: EuroPCR 2018; May 24, 2018; Paris, France; ClinicalTrials.gov: NCT01553526.

* Data shown as mean ± SD

**Small vessel vs Non-small vessel

‡ Number of Lesions

Δ Composite of cardiac death, target vessel Q-wave or non-Q wave Myocardial Infarction (MI), Emergent Coronary Artery Bypass Graft (CABG), clinically driven Target Lesion Revascularization (TLR).

§ ST as per ARC definition

Clinical data conducted with Orsiro, Orsiro Mission's predecessor device can be used to illustrate Orsiro Mission clinical outcomes.

Orsiro is a trademark or registered trademark of the BIOTRONIK Group of Companies.

BIOFLOW-III

Chronic Total Occlusion subgroup

Conclusions

- In this all-comers setting a low Target Lesion Failure¹ (TLF) rate was observed out to 5 years, which implies safety and effectiveness of Orsiro[®]
- The low TLF rate was confirmed for pre-defined subgroups: Diabetics, Acute Myocardial Infarction (MI), Small vessels and Chronic Total Occlusion (CTO)
- Orsiro demonstrated excellent device (98.8%) and procedural (98.2%) success in total population

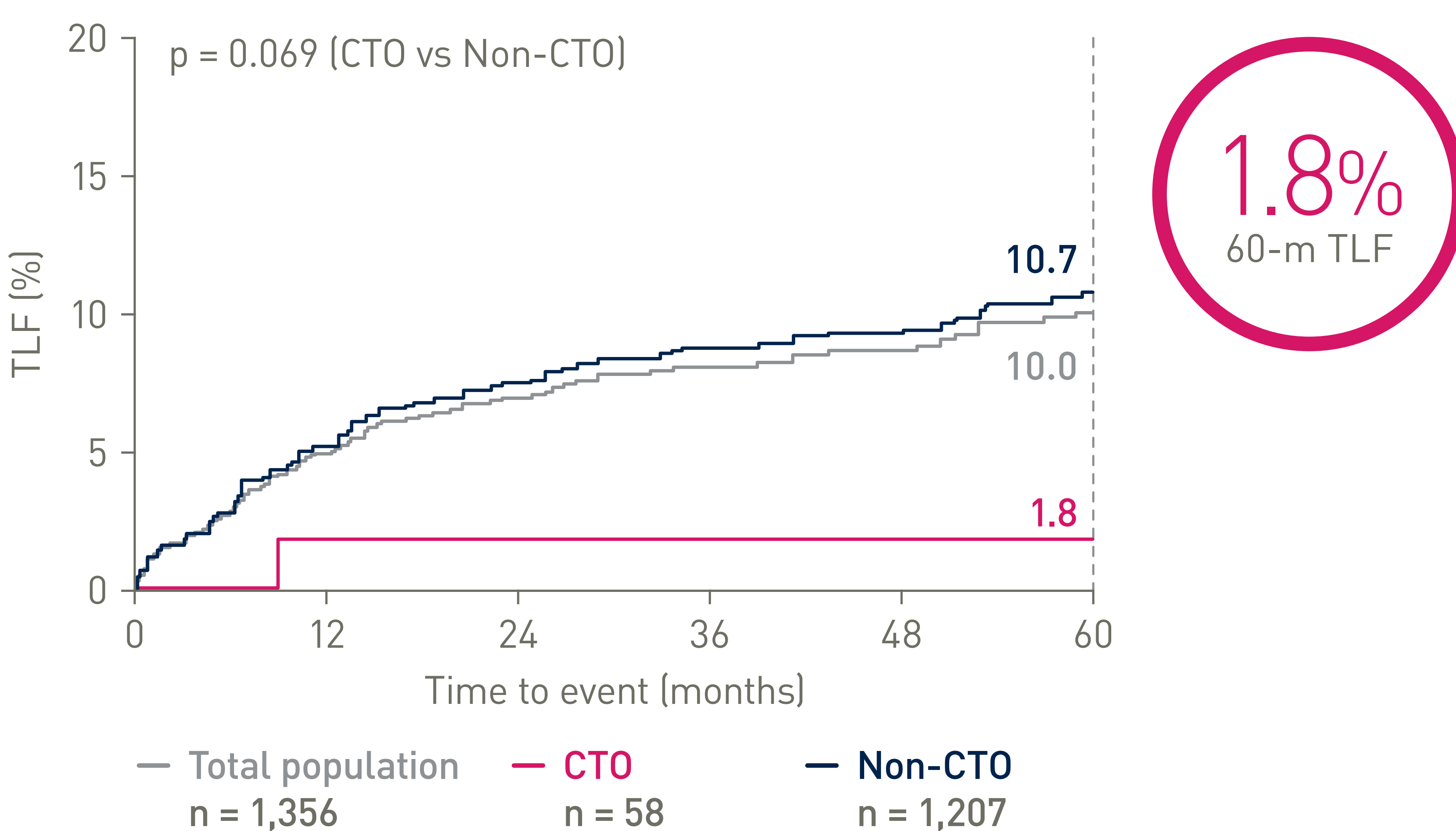
Patient characteristics ¹	Overall n = 1,356	CTO n = 58
Hypertension	75.9%	81.0%
Hypercholesteraemia	60.1%	60.3%
Smoking	54.6%	55.2%
Diabetes mellitus	29.6%	27.6%
Insulin-dependent	34.1%	37.5%
Non-insulin-dependent	65.9%	62.5%
History of MI	27.7%	27.6%

Lesion characteristics ¹	Overall n = 1,738 [‡]	CTO n = 58
B2/C type lesions	52.1%	80.7%
Bifurcation	16.2%	26.5%
Moderate calcification	23.6%	24.1%
Severe calcification	7.0%	12.0%
Reference vessel diameter (mm)*	3.0 ± 0.4	2.9 ± 0.5
Lesion length (%)*	15.8 ± 9.1	21.8 ± 12.9
Diameter stenosis (%)	86.3 ± 11.1	95 ± 11.1

Major secondary endpoints results out to 5 years¹

	Total population n = 1,356	CTO n = 58	Non-CTO n = 1,207	p-value**
TLF	10.0%	1.8%	10.7%	0.069
Cardiac death	3.1%	2.7%	2.9%	0.812
TV-MI	4.1%	1.8%	4.5%	0.421
CD-TLR	6.1%	1.8%	6.7%	0.227
ST [§]	1.8%	0.0%	1.9%	0.355

CTO subgroup TLF^Δ rates out to 5 years¹



1. Waltenberger J. BIOFLOW-III; Presentation of Five Year Target Lesion Failure Data; Presented at: EuroPCR 2018; May 24, 2018; Paris, France; ClinicalTrials.gov: NCT01553526.

* Data shown as mean ± SD

**CTO vs Non-CTO

‡ Number of Lesions

Δ Composite of cardiac death, target vessel Q-wave or non-Q wave Myocardial Infarction (MI), Emergent Coronary Artery Bypass Graft (CABG), clinically driven Target Lesion Revascularization (TLR).

§ ST as per ARC definition

Clinical data conducted with Orsiro, Orsiro Mission's predecessor device can be used to illustrate Orsiro Mission clinical outcomes.

Orsiro is a trademark or registered trademark of the BIOTRONIK Group of Companies.

Vascular Intervention // Coronary // **Orsiro**

BIOFLOW-III

Complex lesions subgroup

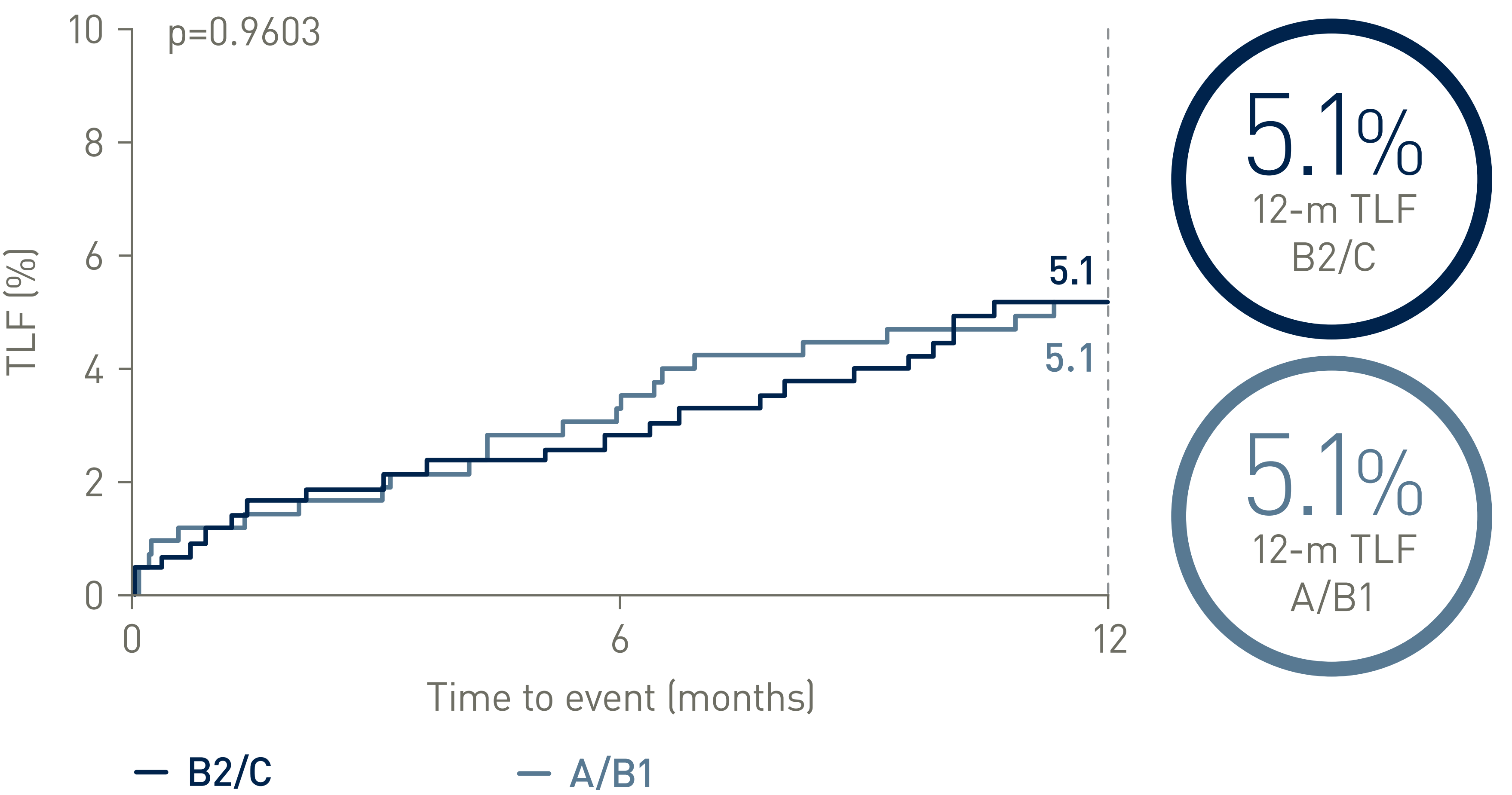
Conclusion

- The low Target Lesion Failure (TLF) rate was confirmed for pre-defined subgroups including the complex lesion subgroup. Regardless of the lesion type, Orsiro® performs equally well in both complex and non-complex lesions

Patient characteristics ¹	A/B1 n = 611	B2/C n = 743	p-value
Age, yrs (mean)	66.0	66.3	0.6256
Hypertension	76%	76%	0.7769
Hypercholesteremia	59%	61%	0.3477
Diabetes	32%	28%	0.1076
Insulin-dependent	33%	35%	0.7593
Non-insulin-dependent	67%	65%	

Lesion characteristics ¹	A/B1 n = 715	B2/C n = 1,012	p-value
Lesion length (mm)*	13.1 ± 5.8	17.6 ± 10.4	<0.0001
Reference vessel diameter (mm)*	3.0 ± 0.4	3.0 ± 0.4	0.0070
Moderate calcification	20.7%	26.0%	0.0102
Severe calcification	2.0%	10.7%	<0.0001
CTO	1.2%	6.0%	<0.0001
Tortuosity – Excessive	0.8%	4.1%	<0.0001

Complex lesion subgroup TLF^Δ rates out to 12 months¹



ACC/AHA lesion classification²



1. Waltenberger J. BIOFLOW-III – One Year Safety And Performance Results; Presentation at: CRT 2015; Feb 21, 2015; Washington D.C, USA; ClinicalTrials.gov: NCT01553526; 2. Waltenberger J. BIOFLOW-III – 12 months Clinical Data; Poster presented at: TCT 2013; October 27, 2013; California, USA; ClinicalTrials.gov: NCT01553526.

* Data shown as mean ± SD

^Δ Composite of cardiac death, target vessel Q-wave or non-Q wave Myocardial Infarction (MI), Emergent Coronary Artery Bypass Graft (CABG), clinically driven Target Lesion Revascularization (TLR).

Clinical data conducted with Orsiro, Orsiro Mission's predecessor device can be used to illustrate Orsiro Mission clinical outcomes.

Orsiro is a trademark or registered trademark of the BIOTRONIK Group of Companies.

Vascular Intervention // Coronary // Orsiro



BIOFLOW-III

Multi-vessel disease subgroup

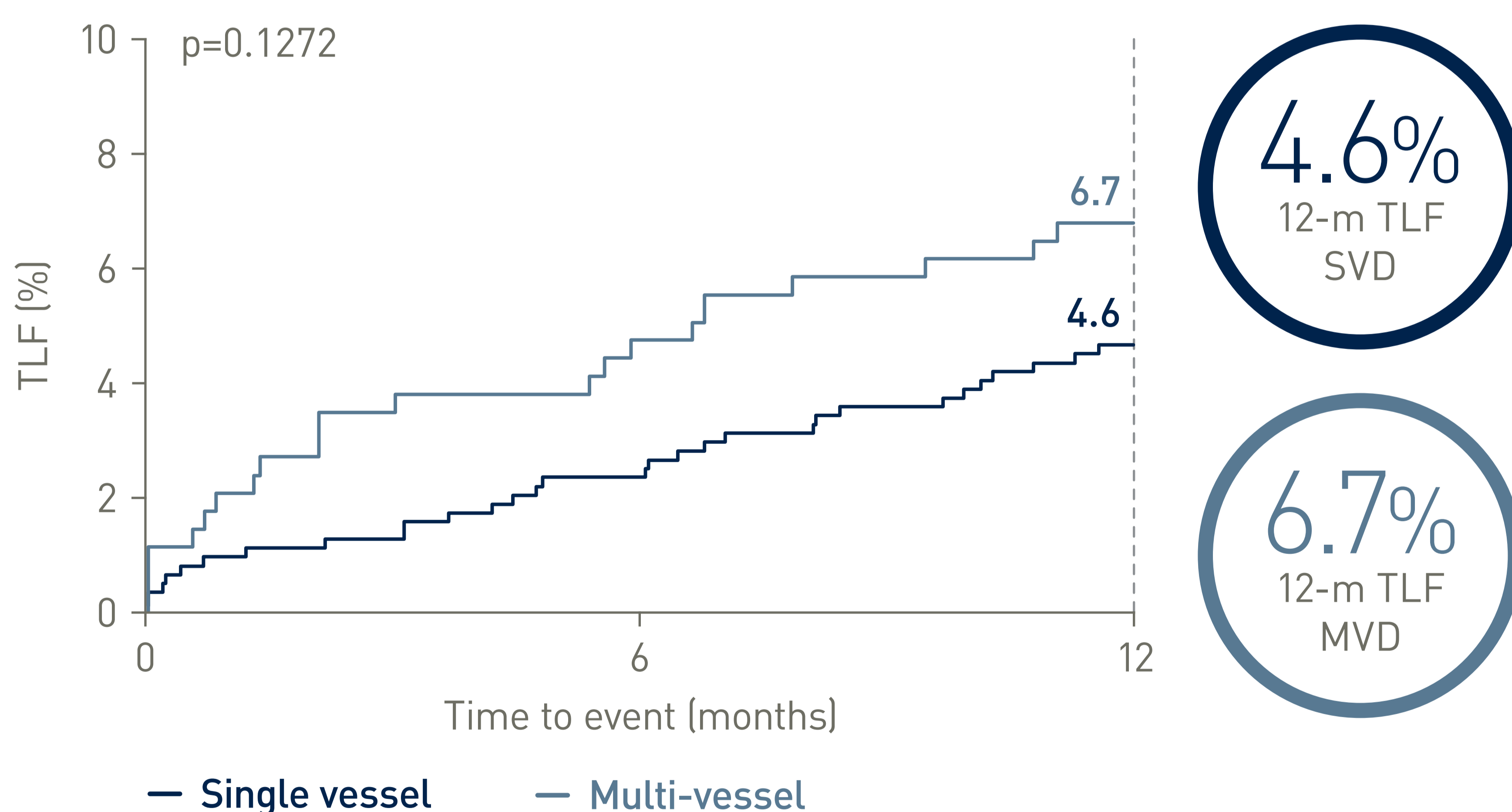
Conclusion

- The low Target Lesion Failure (TLF) rate was not only observed in the overall cohort, but also in patients with multi-vessel disease as seen in this post-hoc analysis

Patient characteristics ¹	SVD* n = 1,050	MVD** n = 305	p-value
Age, yrs [‡]	65.5 ± 10.8	68.0 ± 10.4	0.0003
Hypertension	75%	78%	0.3942
Hypercholesteremia	59%	63%	0.1942
Diabetes	29%	32%	0.3537
Insulin dependent	68%	59%	
Non-insulin dependent	32%	41.2%	

Lesion characteristics ¹	SVD* n = 1,050	MVD** n = 305	p-value
B2/C type lesions	50.2%	54.8%	0.4669
Lesion length (mm) [‡]	18.2 ± 5.7	18.0 ± 5.9	
Reference vessel diameter (mm) [‡]	3.0 ± 0.4	3.0 ± 0.4	

Multi-vessel disease TLF^Δ rates out to 12 months¹



1. Waltenberger J. BIOFLOW-III, 1-Year TLF Data in patients with complex lesions; Presentation at: EuroPCR 2015; 19-22 May, 2015; Paris, France; ClinicalTrials.gov: NCT01553526.

* Single vessel Disease

**Multi-vessel Disease

‡ Data shown as mean ± SD

Δ Composite of cardiac death, target vessel Q-wave or non-Q wave Myocardial Infarction (MI), Emergent Coronary Artery Bypass Graft (CABG), clinically driven Target Lesion Revascularization (TLR).

Clinical data conducted with Orsiro, Orsiro Mission's predecessor device can be used to illustrate Orsiro Mission clinical outcomes.

Orsiro is a trademark or registered trademark of the BIOTRONIK Group of Companies.