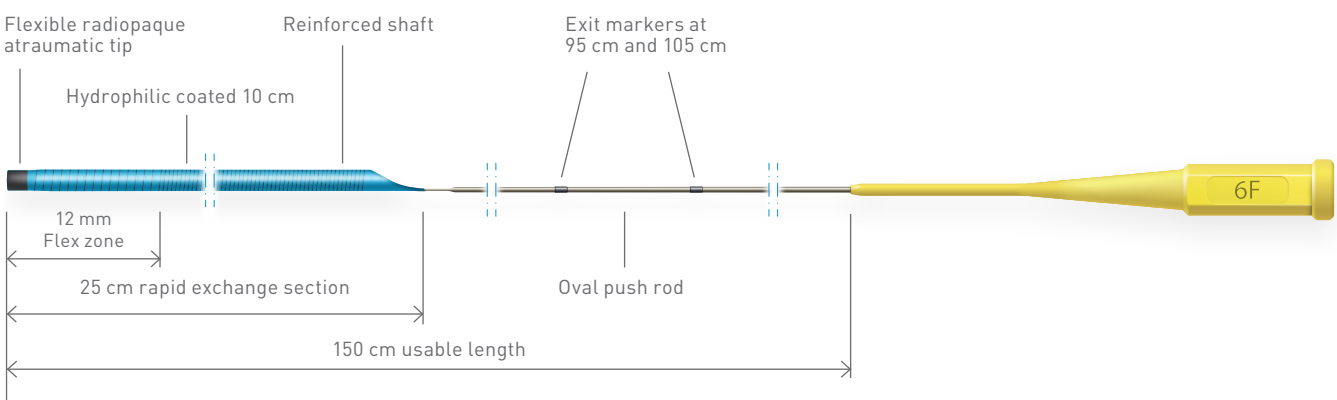


Guidion Hydro

Guide Extension Catheter

Indicated to access discrete regions of the coronary vasculature, and facilitate placement and exchange of interventional devices.*



Technical Data		Support sheath				
		French size	5F, 6F, 7F and 8F			
		Shaft material	Polyether Block Amide			
		Tip	Flexible, radiopaque, 1.3 mm length			
		Outer coating	Hydrophilic distal 10 cm			
		Exit markers	95 cm and 105 cm			
Ordering Information		Ordering number	IMDS article number	Required guide catheter ID	Guidion ID	Rapid exchange length
		451663	G50F25150	5F, ID ≥ 0.056" (1.42 mm)	0.041" (1.04 mm)	25 cm
		451664	G60F25150	6F, ID ≥ 0.070" (1.78 mm)	0.056" (1.42 mm)	25 cm
		451665	G70F25150	7F, ID ≥ 0.078" (1.98 mm)	0.062" (1.57 mm)	25 cm
		451666	G80F25150	8F, ID ≥ 0.088" (2.24 mm)	0.071" (1.80 mm)	25 cm

1. IMDS data on file.

*Indication as per IFU.

Guidion is a trademark of IMDS. All other trademarks are the property of their respective owners.



Manufacturer:
IMDS Operations B.V.
Ceintuurbaan Noord 150
9301 NZ Roden,
The Netherlands
Tel +31 (0)50 8200230
info@imds.nl



Distributor:
BIOTRONIK AG
Ackerstrasse 6
8180 Bülach, Switzerland
Tel +41 (0) 44 8645111
Fax +41 (0) 44 8645005
info.vi@biotronik.com
www.biotronik.com

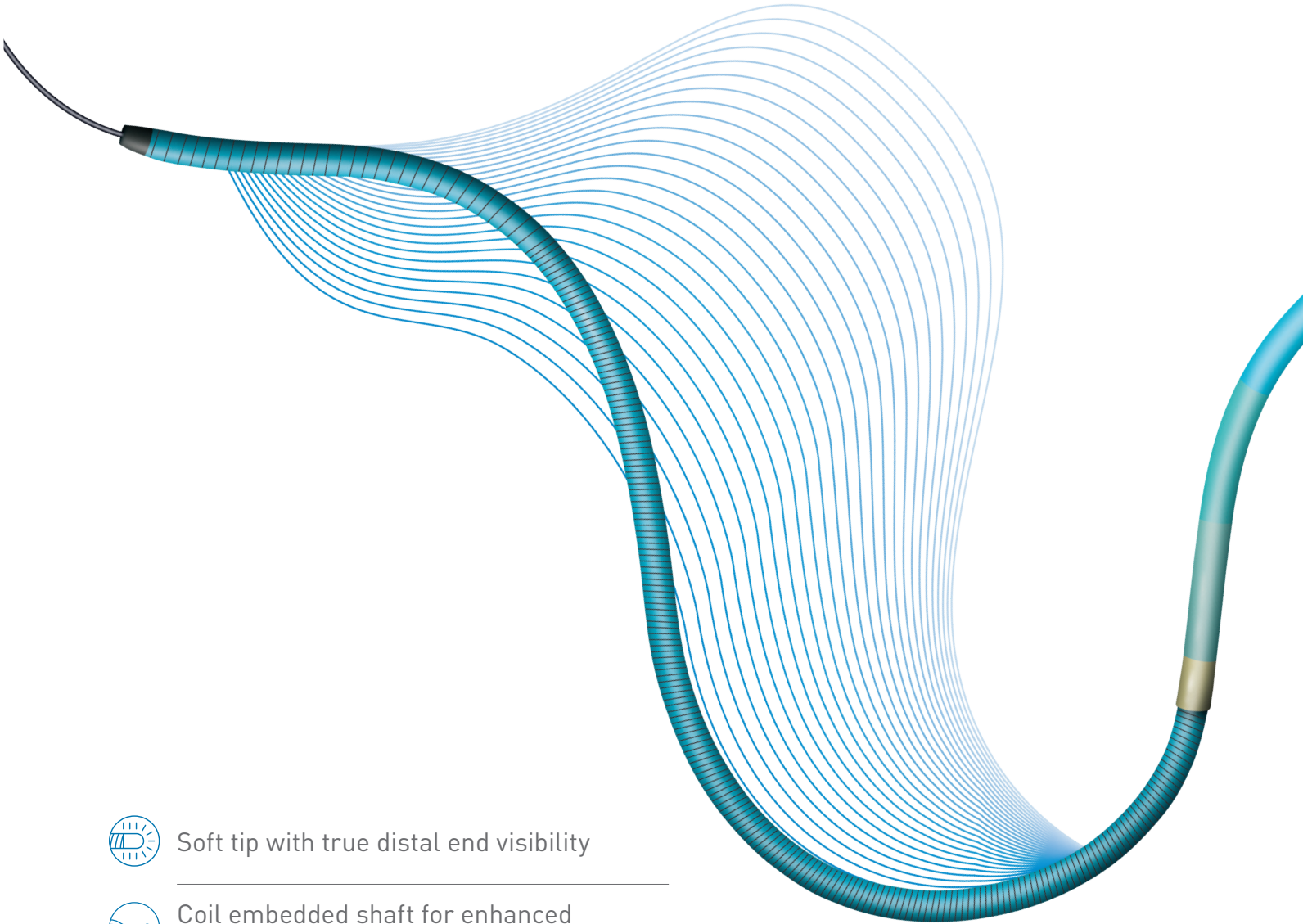
© 2022 BIOTRONIK AG – All rights reserved.
Specifications are subject to modification, revision and improvement.



Vascular Intervention // **Coronary**
Guide Extension Catheter

Guidion Hydro

Designed for reliable delivery of devices to target



- Soft tip with true distal end visibility
- Coil embedded shaft for enhanced device delivery
- Hydrophilic coating for advanced trackability



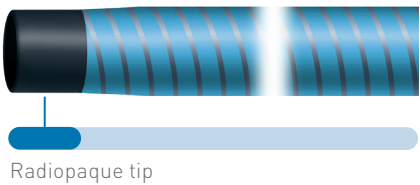
Guidion Hydro

Designed for reliable delivery of devices to target

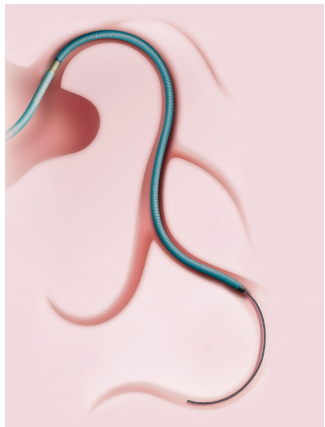
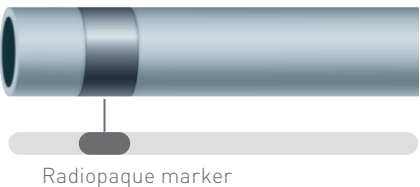
Soft tip with true distal end visibility

The soft tapered tip is designed to be atraumatic by conforming to vessel anatomy. Additionally, the actual distal end visibility enables more accurate device placement.

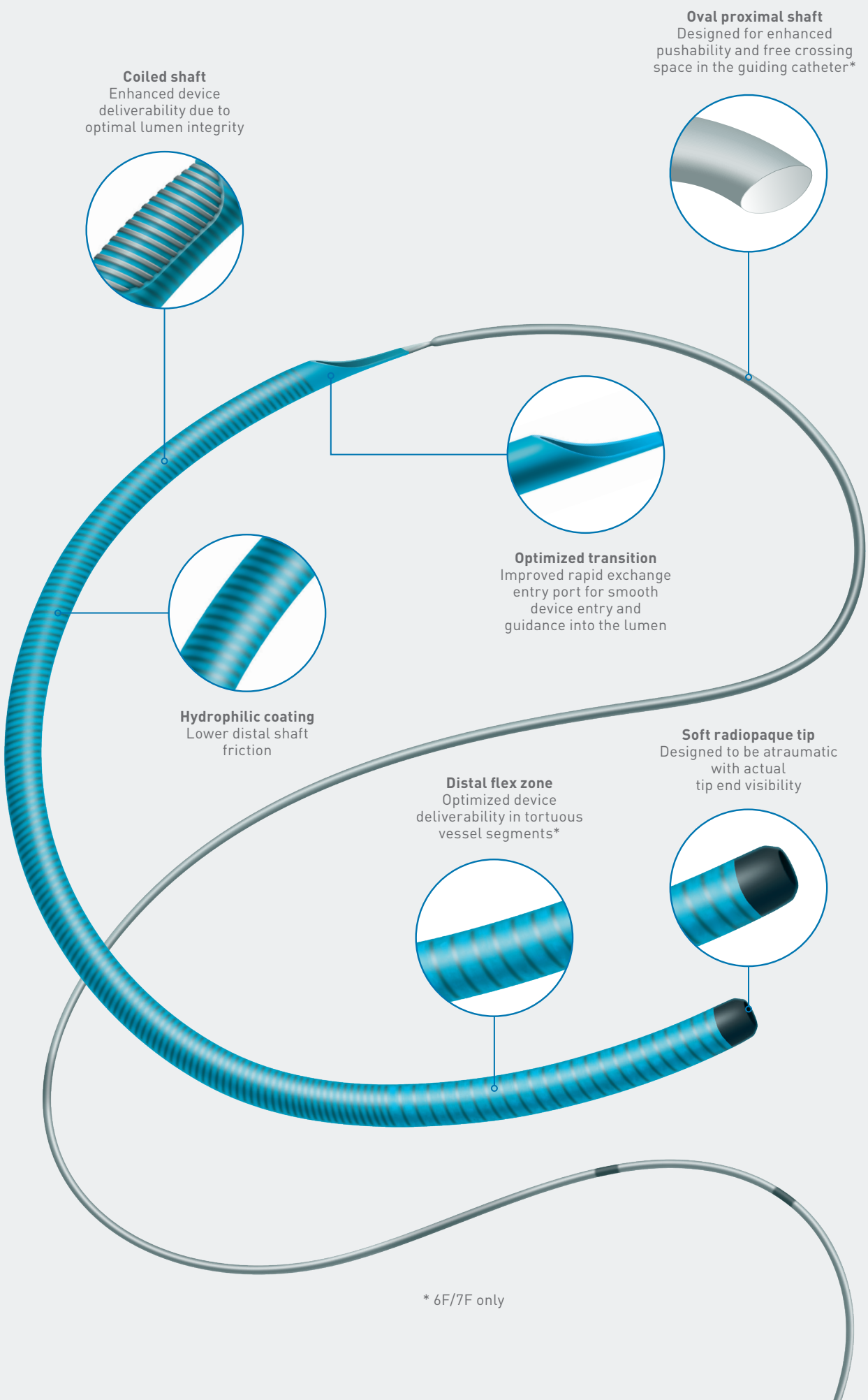
Guidion Hydro
Radiopaque, tungsten filled tip with true tip visualization



Competitors
Radiopaque metal marker



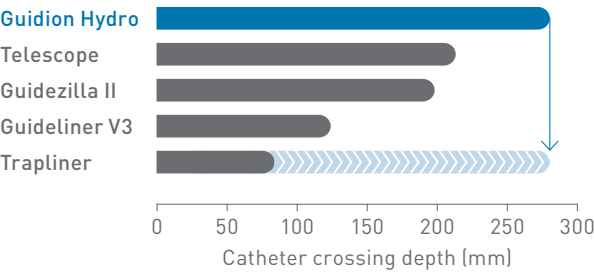
Guidion Hydro is extended from the guiding catheter in order to reach distal parts of the coronary arteries and provide backup support to facilitate successful device delivery.



* 6F/7F only

Coil embedded shaft with distal flex zone for enhanced deliverability¹

The fully embedded coil reinforced shaft with distal flexzone enhances the GEC deliverability to reach distal parts of the coronary arteries. The coiled embedded distal shaft is designed to maintain circular lumen integrity, and avoid device interaction in vessel bends.



The table above measures the maximum depth that was reached per device tracked through a tortuous path.

Hydrophilic coating for advanced trackability

The distal tubing ends in an integrated soft tip. The hydrophilic coating reduces friction, facilitating trackability.¹