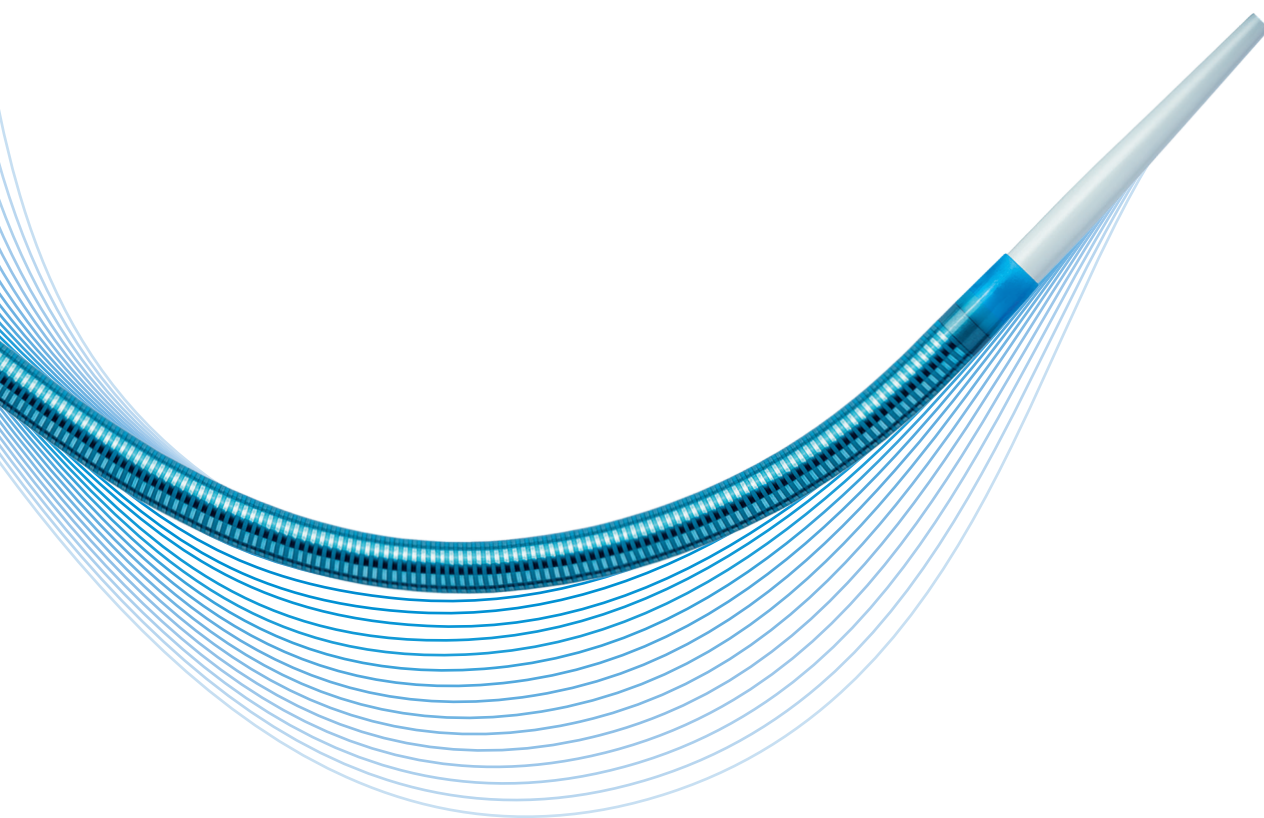


Vascular Intervention // **Peripheral**
Reinforced Introducer Sheath System

Fortress[®]

Introducer sheath system with excellent kink resistance, easy insertion and superb radiopacity.



Excellent kink and
deformation resistance



Easy insertion



Superb radiopacity



BIOTRONIK
excellence for life

Fortress

Introducer sheath system with excellent kink resistance, easy insertion and superb radiopacity.

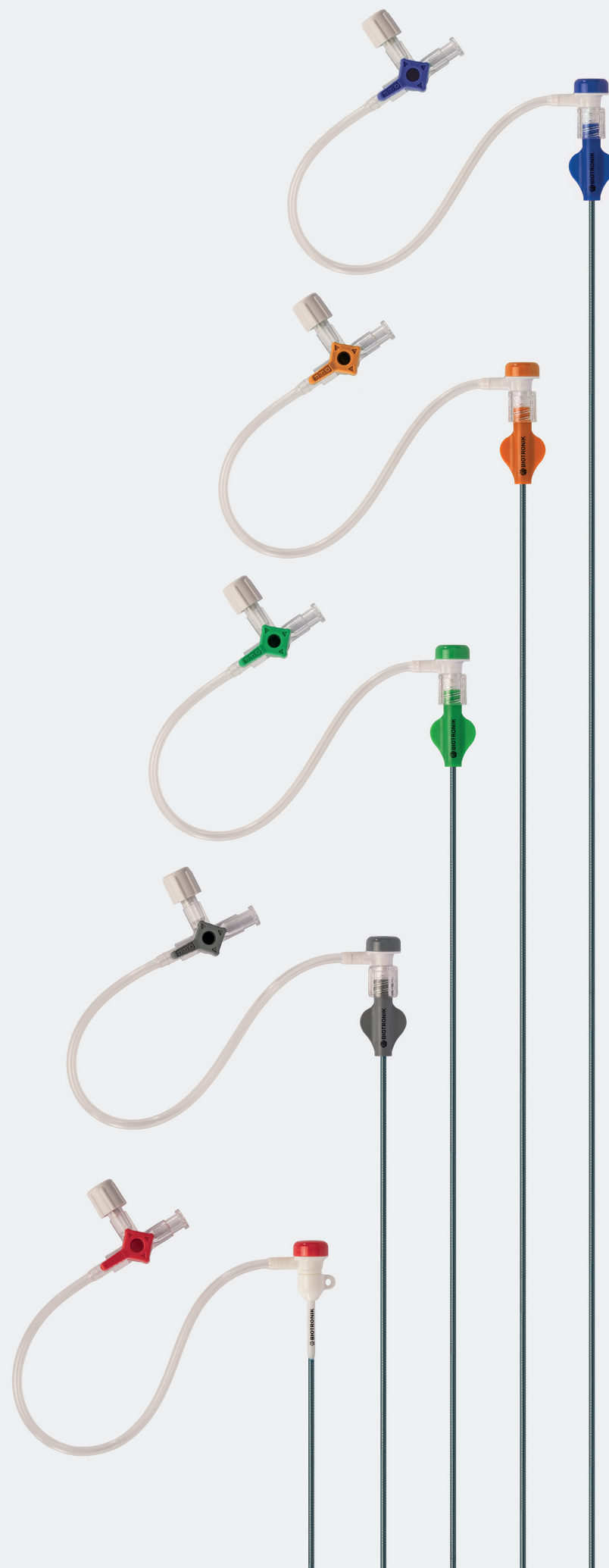
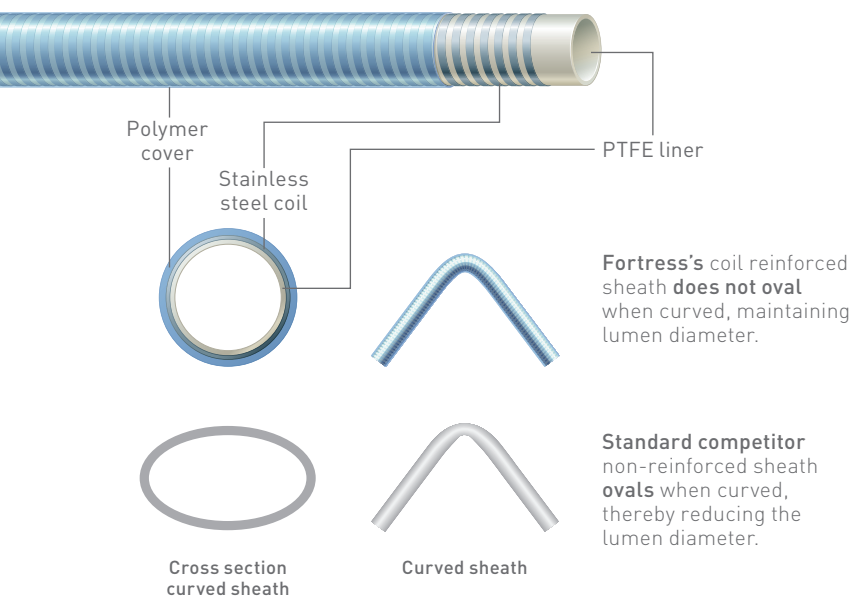
Excellent kink and deformation resistance

Coil reinforced sheath

The polymer embedded stainless steel coil shaft provides flexibility and excellent kink and deformation resistance.

PTFE liner

The non-ovaling characteristic combined with its friction lowering PTFE liner enables devices to easily pass through tight anatomical curves.



Easy insertion

Smooth tapered sheath and dilator tip

The sheath and dilator have a smooth tapered tip and an atraumatic tip design for ease of insertion.

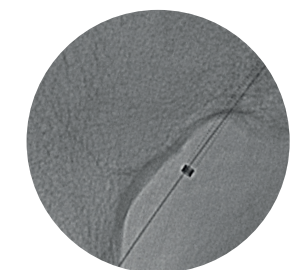
Hydrophobic coated sheath¹

Best in class insertion performance² due to the hydrophobic sheath coating in combination with the smooth tapered sheath and dilator tip.

Superb radiopacity

Radiopaque sheath marker

The platinum alloy marker band provides superb tip radiopacity under fluoroscopic imaging.²



Fortress 4F in the pelvic area

Minimal is optimal

4F

The BIOTRONIK 4F Solutions product portfolio allows for treatment of complex lower limb disease while reducing access site complications.



Indicated to provide access into the femoral, popliteal and infrapopliteal arteries.*

Technical Data		Introducer Sheath					
		French size	4F, 5F, 6F, 7F and 8F				
		Length	45, 65 and 90 cm				
		Sheath material	Stainless steel coil reinforced polymer, PTFE liner				
		Sheath tip	Smooth taper with radiopaque marker band located 3-5 mm from the sheath tip				
		Sheath shape	Pre-curved 45 cm Straight 45, 65 and 90 cm				
		Sheath coating	Hydrophobic, distal 30 cm (5F, 6F, 7F and 8F only)				
		Dilator					
		Recommended guide wire	0.035"				
		Tip	Smooth taper with radiopaque filler material				
		Shape	Pre-curved and straight				
		Hub	4F: fixed hemostatic valve 5F, 6F, 7F, 8F: removable hemostatic valve Side-arm with color coded 3-way stop cock				
Ordering Information		Sheath length (cm)	Sheath shape	Introducer description	Catalogue number	Dilator(s) included	Units per box
4F	45	Curved	Crossover	358813	Curved/Straight	5	
	45	Straight	Straight-45	358814	Curved/Straight	5	
	65	Straight	Straight-65	444486	Straight	5	
	90	Straight	Straight-90	444485	Straight	5	
5F	45	Curved	Crossover	386590	Straight	5	
	45	Straight	Straight-45	386591	Straight	5	
	65	Straight	Straight-65	444484	Straight	5	
	90	Straight	Straight-90	444483	Straight	5	
6F	45	Curved	Crossover	386593	Straight	5	
	45	Straight	Straight-45	386594	Straight	5	
	65	Straight	Straight-65	444482	Straight	5	
	90	Straight	Straight-90	444481	Straight	5	
7F	45	Curved ^a	Crossover	452386	Straight	5	
	45	Straight	Straight-45	452382	Straight	5	
	65	Straight	Straight-65	452383	Straight	5	
	90	Straight	Straight-90	452388	Straight	5	
8F	45	Curved ^a	Crossover	452387	Straight	5	
	45	Straight	Straight-45	452385	Straight	5	
	65	Straight	Straight-65	452384	Straight	5	
	90	Straight	Straight-90	452389	Straight	5	

1. 5F, 6F, 7F and 8F; 2. BIOTRONIK data on file.

*Indication as per IFU.

^aAvailable pre-order only.

Fortress is a trademark or registered trademark of the BIOTRONIK Group of Companies.

Manufacturer:
Contract Medical
International GmbH
Lauensteiner Strasse 37
01277 Dresden, Germany
Tel +49 351 213 88 88
Fax +49 351 213 88 99

Distributor:
BIOTRONIK AG
Ackerstrasse 6
8180 Bülach, Switzerland
Tel +41 (0) 44 8645111
Fax +41 (0) 44 8645005
info.vi@biotronic.com
www.biotronic.com

© 2021 BIOTRONIK AG – All rights reserved.
Specifications are subject to modification, revision and improvement.